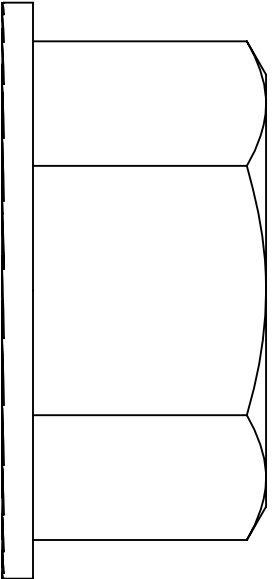
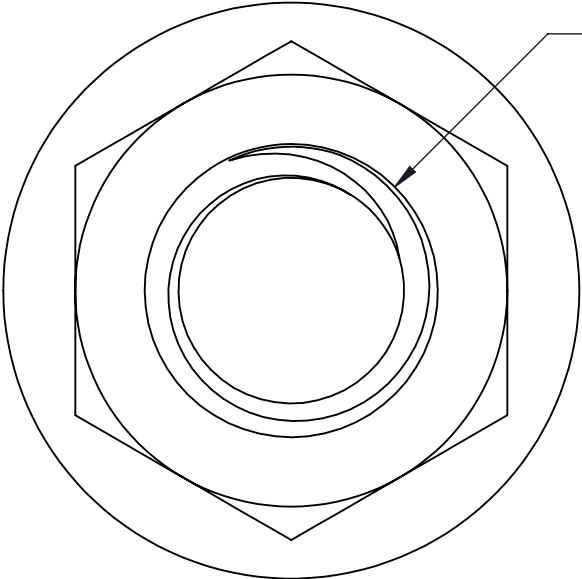


PART NO.	DESCRIPTION
TA25FNHX-(*)	1/4-20 SERRATED FLANGE HEX NUT
TA38FNHX-(*)	1/2-13 SERRATED FLANGE HEX NUT

(*) INSERT MATERIAL/FINISH:
GLV - GALVANIZED STEEL
S6 - STAINLESS STEEL 316

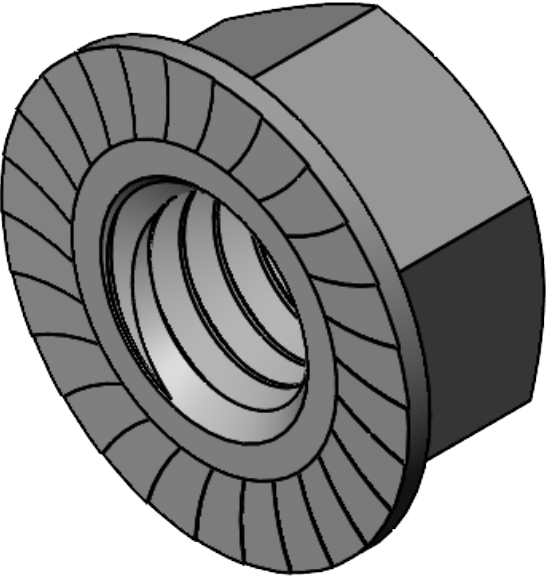


SIDE VIEW




TOP VIEW

3/8-16 UNC-2B



ISOMETRIC VIEW

NOTES:
1) PART MAY VISUALLY DIFFER FROM DRAWING BUT REQUIREMENTS SHOWN ARE MANDATORY

PROPRIETARY AND CONFIDENTIAL THE INFORMATION CONTAINED IN THIS DRAWING IS THE SOLE PROPERTY OF CT INNOVATIONS. ANY REPRODUCTION IN PART OR AS A WHOLE WITHOUT THE WRITTEN PERMISSION OF CT INNOVATIONS IS PROHIBITED.			
		TITLE: TAXXFNHX-(*) SERRATED FLANGE HEX NUT	
DRAWN BY/DATE: DL 11DEC2023	SIZE: B	DWG. NO.: CTI-S48972	REV: A
APPROVED BY/DATE: JDG 15DEC2023	SCALE: NTS	CAD FILE NAME: TA38FNHX CAD SAVE DATE: Monday, December 11, 2023 11:49:43 PM	SHEET: 1 OF 1