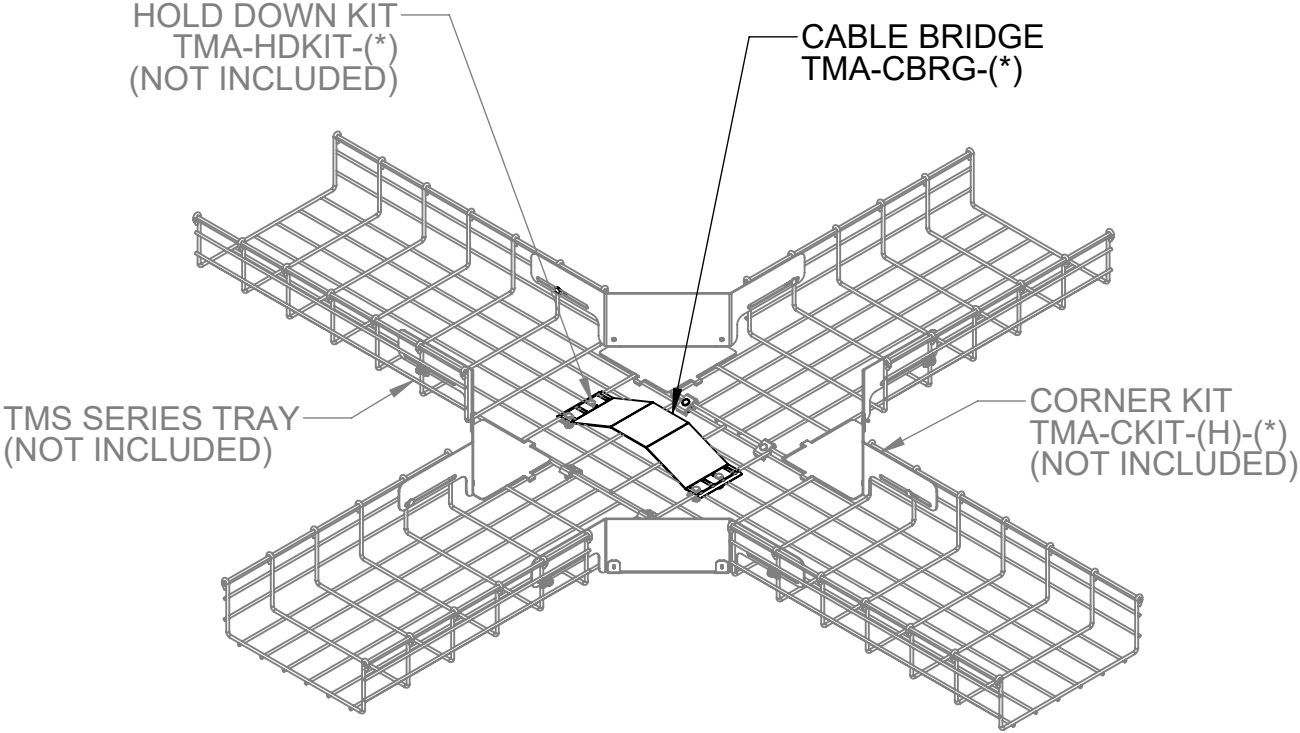
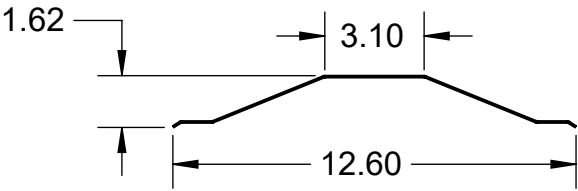
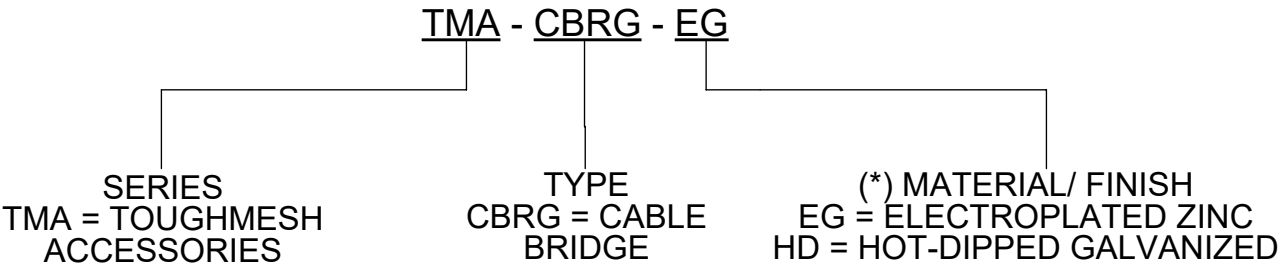


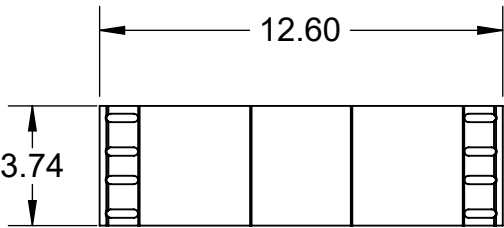
ISOMETRIC VIEW



ISO INSTALLED VIEW




SECTION VIEW



TOP VIEW

NOTE(S):
1) DIMENSIONS SHOWN ARE IN INCHES UNLESS OTHERWISE NOTED.
2) ALL DIMENSIONS SHOWN ARE NOMINAL.
3) SUPPLIED PER PIECE WITHOUT HOLD DOWN KIT/HARDWARE.
4) 4EA HOLD DOWN KIT "TMA-HDKIT-(*)" TO BE ORDERED SEPARATELY.

PROPRIETARY AND CONFIDENTIAL THE INFORMATION CONTAINED IN THIS DRAWING IS THE SOLE PROPERTY OF CT INNOVATIONS. ANY REPRODUCTION IN PART OR AS A WHOLE WITHOUT THE WRITTEN PERMISSION OF CT INNOVATIONS IS PROHIBITED.			
	TITLE: TOUGHMESH CABLE BRIDGE TMA-CBRG-(*)		
	DRAWN BY/DATE: DL 26JUL2023	SIZE: B	DWG. NO.: CTI-S37026
	APPROVED BY/DATE:	SCALE: NTS	REV: B SHEET: 1 OF 1