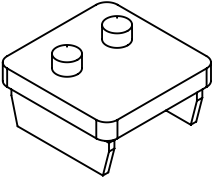
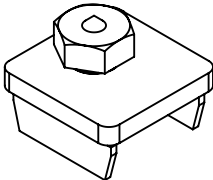
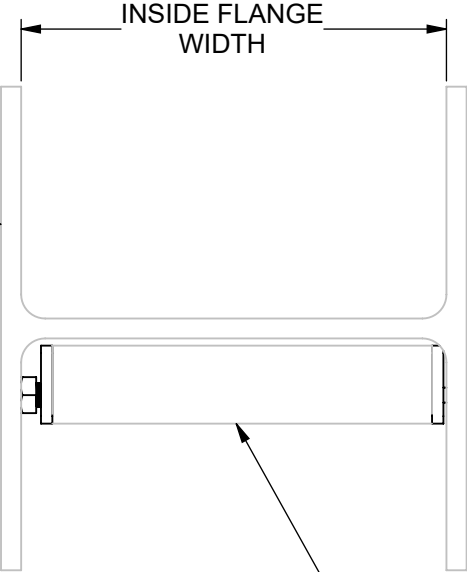


TAF2FBC-(\*) FLANGE TO FLANGE CLAMP

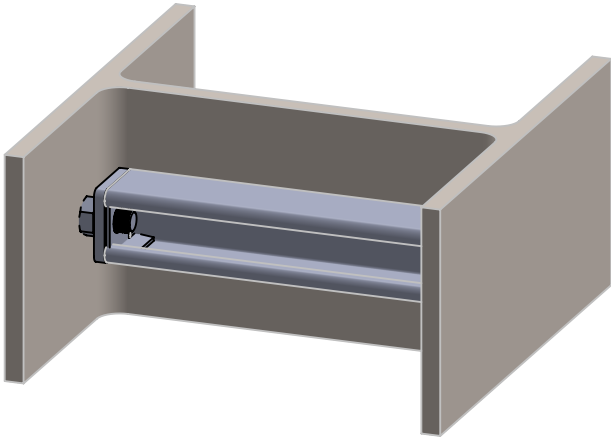
(\*) INSERT MATERIAL/FINISH:  
ZN - GALVANIZED  
HD - HOT DIP  
S6 - STAINLESS STEEL 316  
S4 - STAINLESS STEEL 304



I-BEAM  
(NOT INCLUDED)




1 5/8 X 1 5/8 STRUT CHANNEL  
(NOT INCLUDED)  
SEE NOTE 3



ISOMETRIC VIEW

- NOTES:**
- 1) ALL DIMENSIONS SHOWN ARE NOMINAL.
  - 2) DIMENSIONS SHOWN ARE IN INCHES UNLESS OTHERWISE NOTED.
  - 3) CUT STRUT CHANNEL 1-1/2" LESS THAN THE I-BEAM INSIDE FLANGE WIDTH.

PROPRIETARY AND CONFIDENTIAL THE INFORMATION CONTAINED IN THIS DRAWING IS THE SOLE PROPERTY OF CT INNOVATIONS. ANY REPRODUCTION IN PART OR AS A WHOLE WITHOUT THE WRITTEN PERMISSION OF CT INNOVATIONS IS PROHIBITED.			
		TITLE: <b>TAF2FBC-(*) FLANGE TO FLANGE CLAMP</b>	
DRAWN BY/DATE: DL 06FEB2024	SIZE: <b>B</b>	DWG. NO.: <b>CTI-S16007</b>	REV: <b>A</b>
APPROVED BY/DATE: JDG 09FEB2024	SCALE: <b>NTS</b>	CAD FILE NAME: TAF2FBC_A CAD SAVE DATE: Friday, March 1, 2024 3:41:48 PM	SHEET: <b>1 OF 1</b>