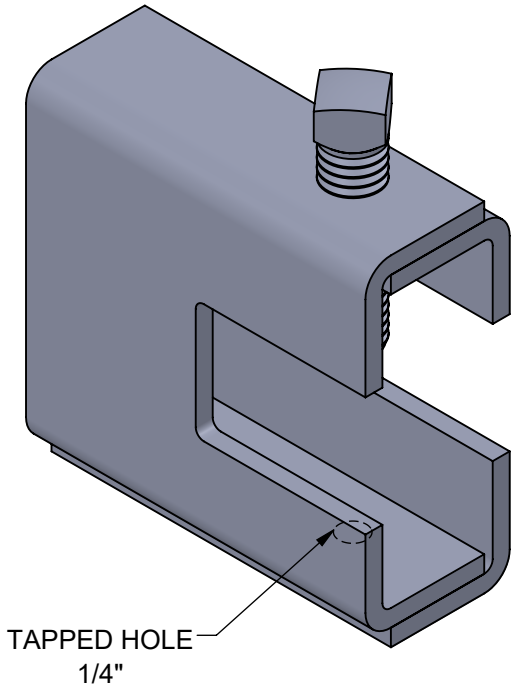
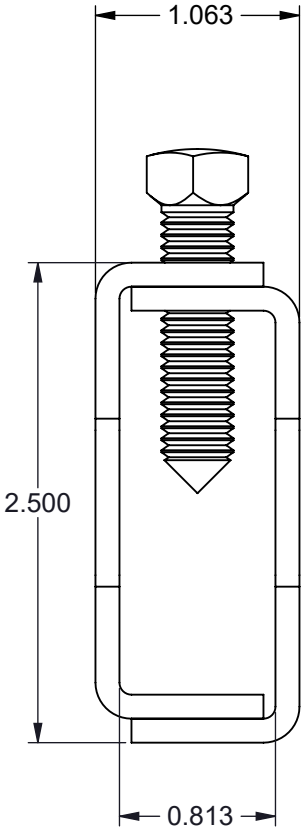
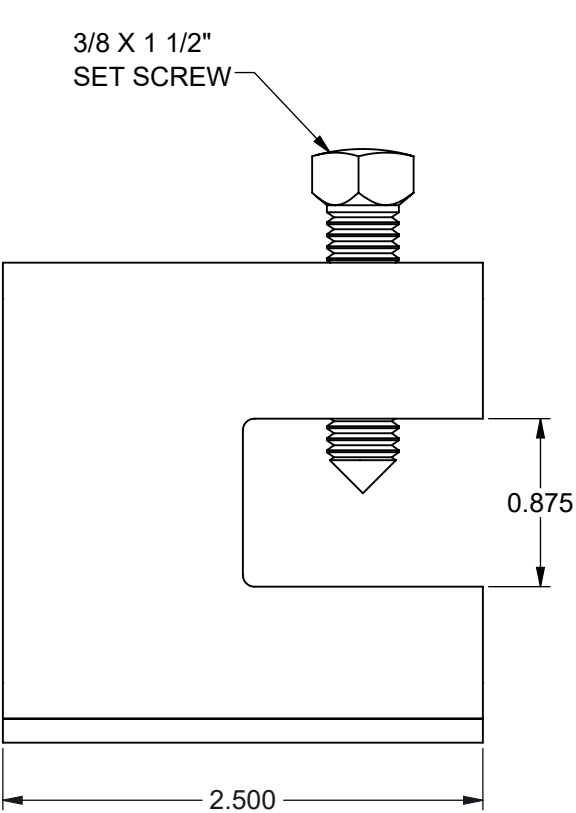



TA014BC-(*) 1/4" ATR BEAM CLAMP

- (*) INSERT MATERIAL/FINISH:
- ZN - GALVANIZED
 - HD - HOT DIP
 - S6 - STAINLESS STEEL 316
 - S4 - STAINLESS STEEL 304



- NOTES:**
- 1) ALL DIMENSIONS SHOWN ARE NOMINAL.
 - 2) DIMENSIONS SHOWN ARE IN INCHES UNLESS OTHERWISE NOTED.

PROPRIETARY AND CONFIDENTIAL THE INFORMATION CONTAINED IN THIS DRAWING IS THE SOLE PROPERTY OF CT INNOVATIONS. ANY REPRODUCTION IN PART OR AS A WHOLE WITHOUT THE WRITTEN PERMISSION OF CT INNOVATIONS IS PROHIBITED.			
		TITLE: TA014BC-(*) 1/4" ATR BEAM CLAMP	
DRAWN BY/DATE: DL 31JAN2024	SIZE: B	DWG. NO.: CTI-S16002	REV: A
APPROVED BY/DATE: JDG 02FEB2024	SCALE: NTS	CAD FILE NAME: TXXXBC_A CAD SAVE DATE: Friday, March 1, 2024 3:35:44 PM	SHEET: 1 OF 1