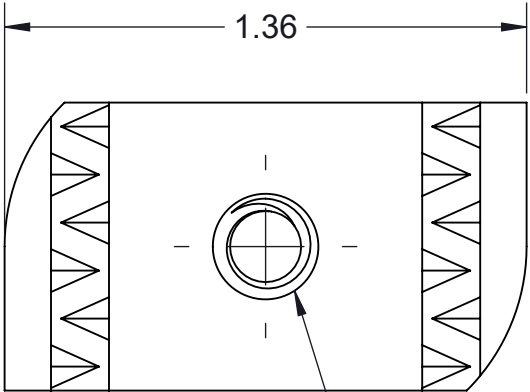


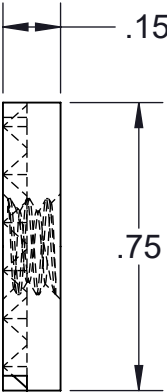
PART NO.
TA25NCM-(*)

(*) INSERT MATERIAL/FINISH:
ZN - GALVANIZED
S6 - STAINLESS STEEL 316
S4 - STAINLESS STEEL 304

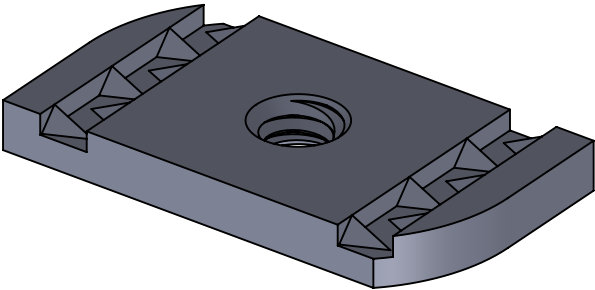


1/4-20 UNC-2B THRU

TOP VIEW




SIDE VIEW



ISOMETRIC VIEW

- NOTES:
- 1) ALL DIMENSIONS SHOWN ARE NOMINAL.
 - 2) DIMENSIONS SHOWN ARE IN INCHES UNLESS OTHERWISE NOTED.
 - 3) SOLD IN BAGS OF 20. BOX QTY: 100 (5 BAGS OF 20).

PROPRIETARY AND CONFIDENTIAL THE INFORMATION CONTAINED IN THIS DRAWING IS THE SOLE PROPERTY OF CT INNOVATIONS. ANY REPRODUCTION IN PART OR AS A WHOLE WITHOUT THE WRITTEN PERMISSION OF CT INNOVATIONS IS PROHIBITED.			
	TITLE: TA25NCM-(*) 1/4-20 MINI CHANNEL NUT		
	DRAWN BY/DATE: DL 06JAN2024	SIZE: B	DWG. NO.: CTI-S14068
	APPROVED BY/DATE: JDG 09JAN2024	SCALE: NTS	REV: A
		CAD FILE NAME: TA25NCM_A CAD SAVE DATE: Tuesday, February 27, 2024 2:32:56 PM	SHEET: 1 OF 1