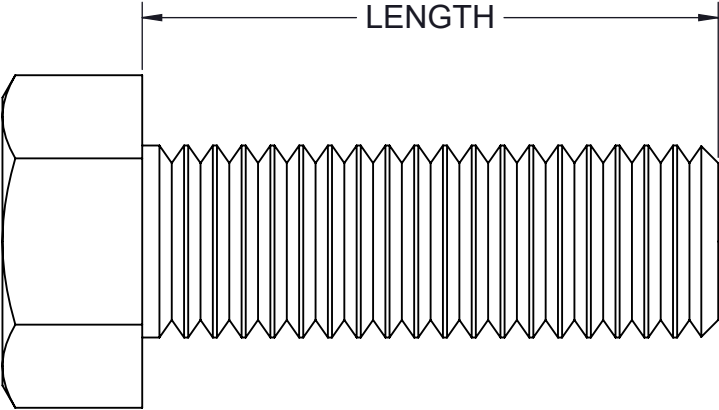
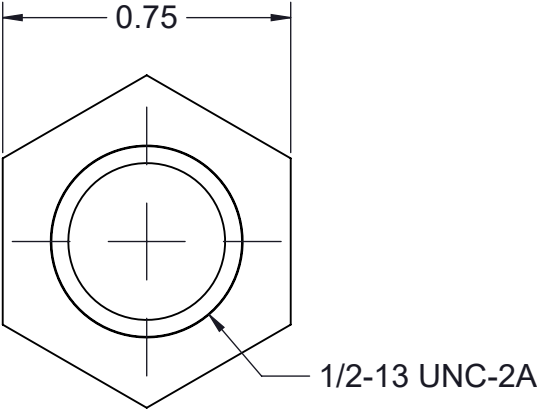


PART NO.	LENGTH (in)
TA50HX150-(* )	1.50

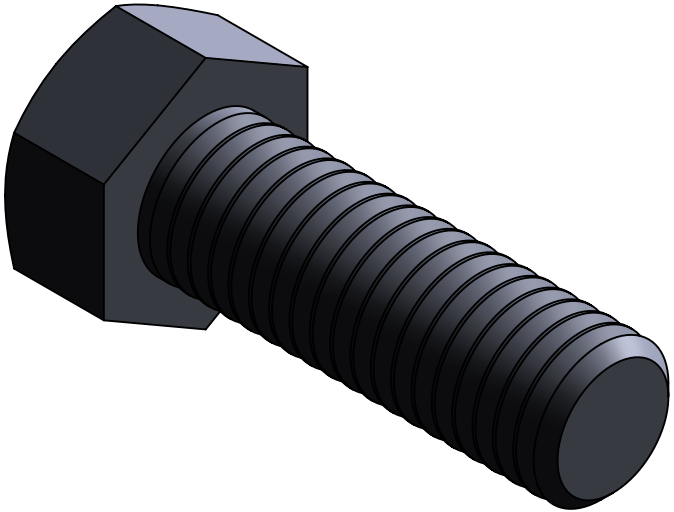
(\*) INSERT MATERIAL/FINISH:  
ZN - GALVANIZED  
S6 - STAINLESS STEEL 316  
S4 - STAINLESS STEEL 304



SIDE VIEW




FRONT VIEW



ISOMETRIC VIEW

**NOTES:**  
1) ALL DIMENSIONS SHOWN ARE NOMINAL.  
2) DIMENSIONS SHOWN ARE IN INCHES UNLESS OTHERWISE NOTED.  
3) SOLD IN BAGS OF 20. BOX QTY: 100 (5BAGS OF 20).

PROPRIETARY AND CONFIDENTIAL THE INFORMATION CONTAINED IN THIS DRAWING IS THE SOLE PROPERTY OF CT INNOVATIONS. ANY REPRODUCTION IN PART OR AS A WHOLE WITHOUT THE WRITTEN PERMISSION OF CT INNOVATIONS IS PROHIBITED.			
	TITLE: <b>TA50HX150-(* )</b> <b>1/2-13 X 1 1/2 HEX HEAD CAP SCREW</b>		
	DRAWN BY/DATE: DL 31JAN2024	SIZE: <b>B</b>	DWG. NO.: <b>CTI-S14066</b>
	APPROVED BY/DATE: JDG 02FEB2024	SCALE: <b>NTS</b>	REV: <b>A</b>
		CAD FILE NAME: TA50HX150_A CAD SAVE DATE: Tuesday, February 27, 2024 2:26:39 PM	SHEET: <b>1 OF 1</b>