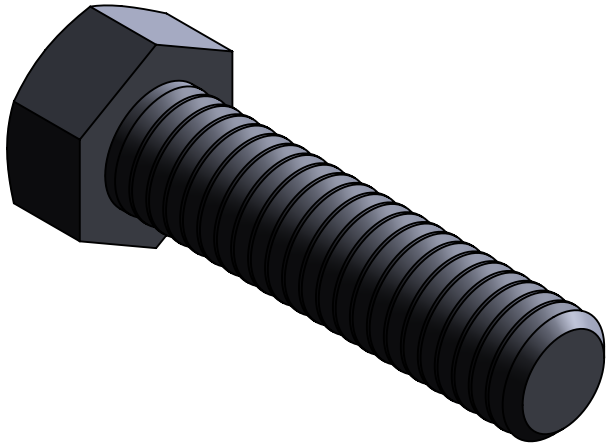
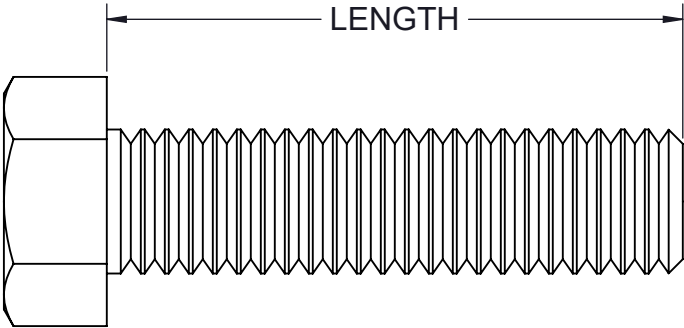


PART NO.	LENGTH (in)
TA38HX150-(* )	1.50

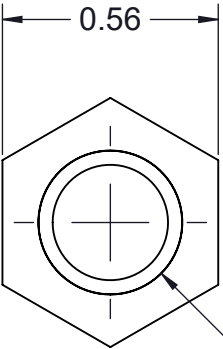
(\*) INSERT MATERIAL/FINISH:  
ZN - GALVANIZED  
S6 - STAINLESS STEEL 316  
S4 - STAINLESS STEEL 304



ISOMETRIC VIEW



SIDE VIEW




3/8-16 UNC-2A

FRONT VIEW

NOTES:

- 1) ALL DIMENSIONS SHOWN ARE NOMINAL.
- 2) DIMENSIONS SHOWN ARE IN INCHES UNLESS OTHERWISE NOTED.
- 3) SOLD IN BAGS OF 20. BOX QTY: 100 (5BAGS OF 20).

PROPRIETARY AND CONFIDENTIAL THE INFORMATION CONTAINED IN THIS DRAWING IS THE SOLE PROPERTY OF CT INNOVATIONS. ANY REPRODUCTION IN PART OR AS A WHOLE WITHOUT THE WRITTEN PERMISSION OF CT INNOVATIONS IS PROHIBITED.			
	TITLE:  TA38HX150-(* ) 3/8-16 X 1 1/2 HEX HEAD CAP SCREW		
	DRAWN BY/DATE: DL 12JAN2023	SIZE: B	DWG. NO.: CTI-S14064
	APPROVED BY/DATE: JDG 02FEB2024	SCALE: NTS	REV: A
		CAD FILE NAME: TA38HX100_A CAD SAVE DATE: Tuesday, February 27, 2024 2:25:59 PM	SHEET: 1 OF 1