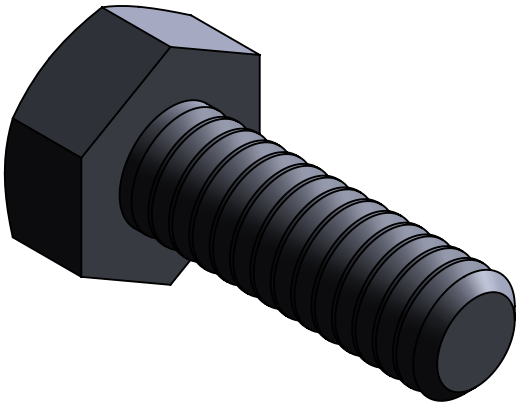
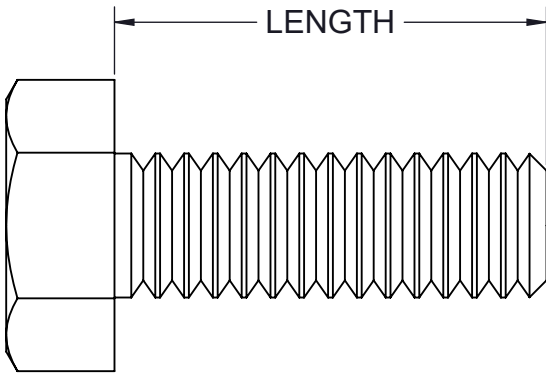


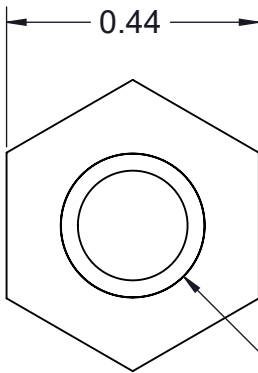
6		5		4		3		2		1	
PART NO.		LENGTH (in)									
TA25HX075-(*)		0.75									
(*) INSERT MATERIAL/FINISH: ZN - GALVANIZED S6 - STAINLESS STEEL 316 S4 - STAINLESS STEEL 304											



ISOMETRIC VIEW




SIDE VIEW



1/4-20 UNC-2A

FRONT VIEW

- NOTES:**
- 1) ALL DIMENSIONS SHOWN ARE NOMINAL.
  - 2) DIMENSIONS SHOWN ARE IN INCHES UNLESS OTHERWISE NOTED.
  - 3) SOLD IN BAGS OF 20. BOX QTY: 100 (5BAGS OF 20).

PROPRIETARY AND CONFIDENTIAL THE INFORMATION CONTAINED IN THIS DRAWING IS THE SOLE PROPERTY OF CT INNOVATIONS. ANY REPRODUCTION IN PART OR AS A WHOLE WITHOUT THE WRITTEN PERMISSION OF CT INNOVATIONS IS PROHIBITED.			
		TITLE:  <b>TA25HX075-(* )</b> <b>1/4-20 X 3/4 HEX HEAD CAP SCREW</b>	
DRAWN BY/DATE: DL 31JAN2024	SIZE: <b>B</b>	DWG. NO.: <b>CTI-S14063</b>	REV: <b>A</b>
APPROVED BY/DATE: JDG 02FEB2024	SCALE: <b>NTS</b>	CAD FILE NAME: TA25HX075_A CAD SAVE DATE: Wednesday, January 31, 2024 4:12:56 PM	SHEET: <b>1 OF 1</b>