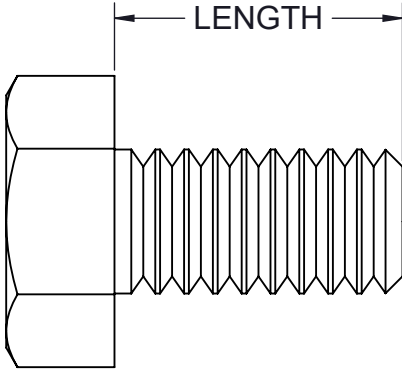
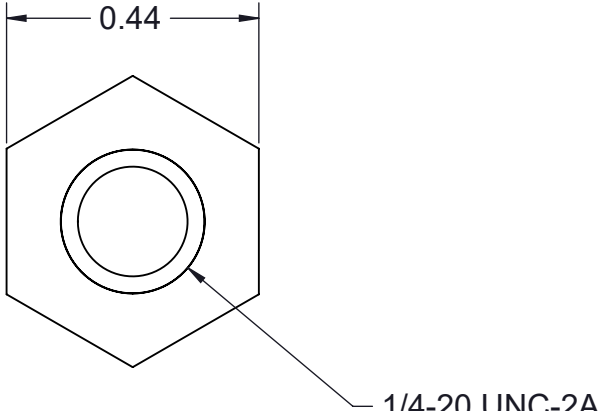
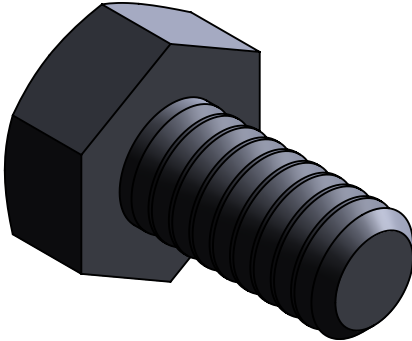
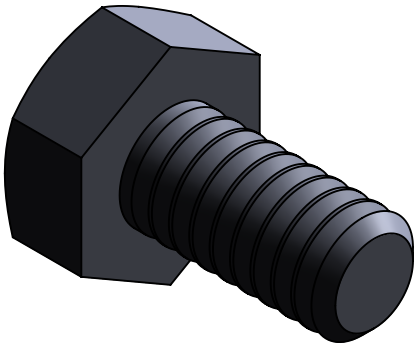
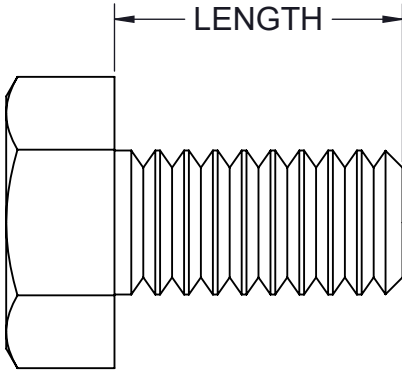


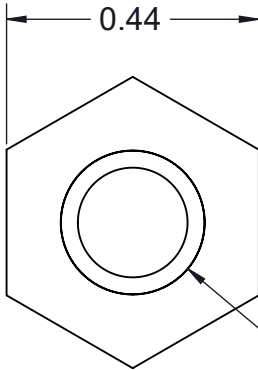
|   |  |             |  |   |  |   |  |   |  |   |  |
|---|--|-------------|--|---|--|---|--|---|--|---|--|
| 6   |  | 5           |  | 4 |  | 3 |  | 2 |  | 1 |  |
| PART NO.  |  | LENGTH (in) |  |   |  |   |  |   |  |   |  |
| TA25HX050-(*)   |  | 0.50        |  |   |  |   |  |   |  |   |  |
| <div>(*) INSERT MATERIAL/FINISH:<br/>ZN - GALVANIZED<br/>S6 - STAINLESS STEEL 316<br/>S4 - STAINLESS STEEL 304</div>  |  |             |  |   |  |   |  |   |  |   |  |
| <div><div><p>SIDE VIEW</p></div><div><p>FRONT VIEW</p></div><div><p>ISOMETRIC VIEW</p></div></div>   |  |             |  |   |  |   |  |   |  |   |  |
| <div><div><div><div>NOTES:</div><div>1) ALL DIMENSIONS SHOWN ARE NOMINAL.<br/>2) DIMENSIONS SHOWN ARE IN INCHES UNLESS OTHERWISE NOTED.<br/>3) SOLD IN BAGS OF 20. BOX QTY: 100 (5BAGS OF 20).</div></div><div><div><div><div><div></div><div>CT INNOVATIONS</div></div><div><div>DRAWN BY/DATE:<br/>DL31JAN2024</div><div>APPROVED BY/DATE:<br/>JDG02FEB2024</div></div></div><div><div><div>TITLE:<br/>TA25HX050-(*)<br/>1/4-20 X 1/2 HEX HEAD CAP SCREW</div><div><div>SIZE:<br/>B</div><div>SCALE:<br/>NTS</div></div><div><div>DWG. NO.:<br/>CTI-S14062</div><div>CAD FILE NAME: TA25HX050_A<br/>CAD SAVE DATE: Wednesday, January 31, 2024 4:12:38 PM</div></div><div><div>REV:<br/>A</div><div>SHEET:<br/>1 OF 1</div></div></div></div></div></div></div></div> |  |             |  |   |  |   |  |   |  |   |  |
| 6   |  | 5           |  | 4 |  | 3 |  | 2 |  | 1 |  |



ISOMETRIC VIEW




SIDE VIEW



FRONT VIEW

1/4-20 UNC-2A

- NOTES:**
- 1) ALL DIMENSIONS SHOWN ARE NOMINAL.
  - 2) DIMENSIONS SHOWN ARE IN INCHES UNLESS OTHERWISE NOTED.
  - 3) SOLD IN BAGS OF 20. BOX QTY: 100 (5BAGS OF 20).

|   |                      |   |                         |
|---|----------------------|---|-------------------------|
| PROPRIETARY AND CONFIDENTIAL THE INFORMATION CONTAINED IN THIS DRAWING IS THE SOLE PROPERTY OF CT INNOVATIONS. ANY REPRODUCTION IN PART OR AS A WHOLE WITHOUT THE WRITTEN PERMISSION OF CT INNOVATIONS IS PROHIBITED. |                      |   |                         |
|    |                      | TITLE:<br><br><b>TA25HX050-(* )</b><br><b>1/4-20 X 1/2 HEX HEAD CAP SCREW</b>       |                         |
| DRAWN BY/DATE:<br>DL 31JAN2024  | SIZE:<br><b>B</b>    | DWG. NO.:<br><b>CTI-S14062</b>  | REV:<br><b>A</b>        |
| APPROVED BY/DATE:<br>JDG 02FEB2024  | SCALE:<br><b>NTS</b> | CAD FILE NAME: TA25HX050_A<br>CAD SAVE DATE: Wednesday, January 31, 2024 4:12:38 PM | SHEET:<br><b>1 OF 1</b> |