

6

5

4

3

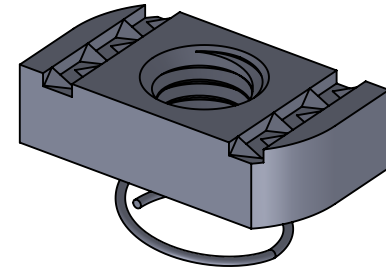
2

1

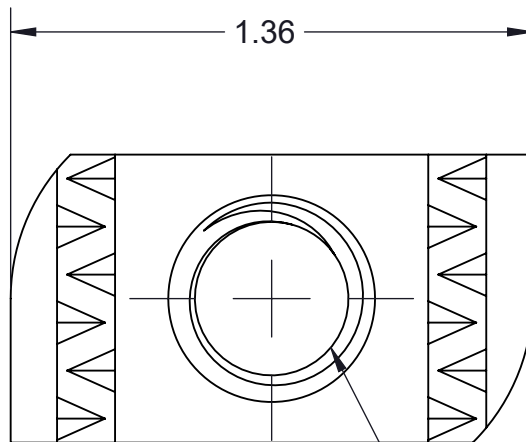
PART NO.

TA50NCSS-(*)

(*) INSERT MATERIAL/FINISH:
ZN - GALVANIZED
S6 - STAINLESS STEEL 316
S4 - STAINLESS STEEL 304

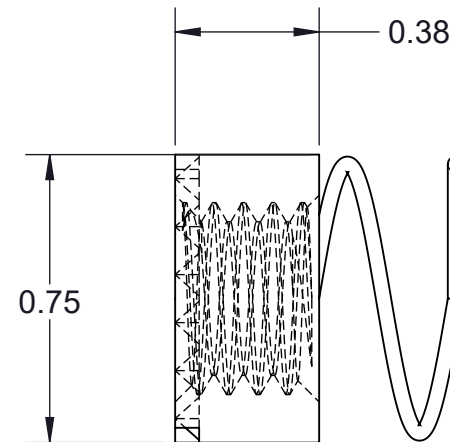


ISOMETRIC VIEW



— 1/2-13 UNC-2B THRU

TOP VIEW



SIDE VIEW

NOTES:

- 1) ALL DIMENSIONS SHOWN ARE NOMINAL.
- 2) DIMENSIONS SHOWN ARE IN INCHES UNLESS OTHERWISE NOTED.
- 3) SOLD IN BAGS OF 20. BOX QTY: 100 (5 BAGS OF 20).

PROPRIETARY AND CONFIDENTIAL. THE INFORMATION CONTAINED IN THIS DRAWING IS THE SOLE PROPERTY OF CT INNOVATIONS. ANY REPRODUCTION IN PART OR AS A WHOLE WITHOUT THE WRITTEN PERMISSION OF CT INNOVATIONS IS PROHIBITED.



TITLE:

TA50NCSS-(*)
1/2-13 CHANNEL NUT WITH SHORT SPRING

DRAWN BY/DATE:	
DL	31JAN2023

SIZE:	B
-------	----------

DWG. NO.: **CTI-S14061**

REV: **A**

APPROVED BY/DATE:
JDG 02FEB2024

SCALE:
NTS

CAD FILE NAME: TA50NCSS_A
CAD SAVE DATE: Wednesday, January 31, 2024 2:50:38 PM

SHEET:
1 OF 1

6

5

4

3

2

1

F

E

D

C

B

A