

6

5

4

3

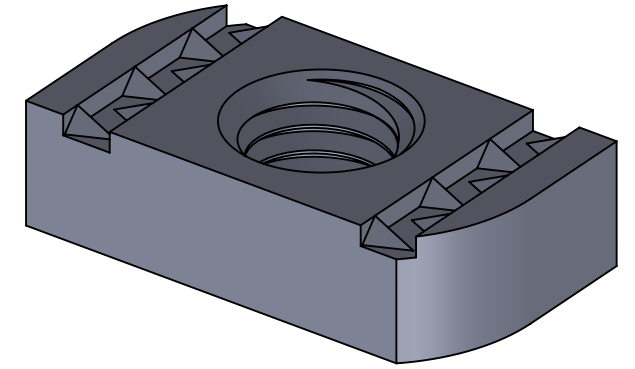
2

1

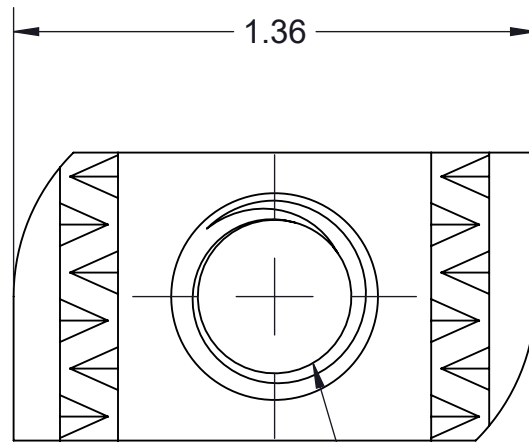
PART NO.

TA50NC-(\*)

(\*) INSERT MATERIAL/FINISH:  
 ZN - GALVANIZED  
 S6 - STAINLESS STEEL 316  
 S4 - STAINLESS STEEL 304

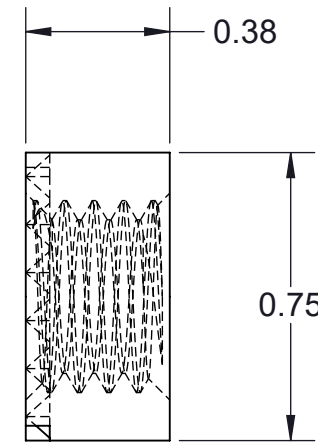


### ISOMETRIC VIEW



### TOP VIEW

— 1/2-13 UNC-2B THRU



### SIDE VIEW

NOTES:

- 1) ALL DIMENSIONS SHOWN ARE NOMINAL.  
2) DIMENSIONS SHOWN ARE IN INCHES UNLESS OTHERWISE NOTED.  
3) SOLD IN BAGS OF 20. BOX QTY: 100 (5 BAGS OF 20).

PROPRIETARY AND CONFIDENTIAL. THE INFORMATION CONTAINED IN THIS DRAWING IS THE SOLE PROPERTY OF CT INNOVATIONS. ANY REPRODUCTION IN PART OR AS A WHOLE WITHOUT THE WRITTEN PERMISSION OF CT INNOVATIONS IS PROHIBITED.



TITLE:
--------

**TA50NC-(\*)**  
**1/2-13 CHANNEL NUT**

DRAWN BY/DATE:  
VA 12JAN2023

SIZE:	<b>B</b>
-------	----------

DWG. NO.: **CTI-S14022**

REV: **B**

APPROVED BY/DATE:  
JDG 12JAN2024

SCALE:  
**NTS**

CAD FILE NAME: TA50NC\_A  
CAD SAVE DATE: Tuesday, February 27, 2024 2:17:48 PM

SHEET:  
**1 OF 1**

6

5

4

3

2

1

F

E

D

C

B

A