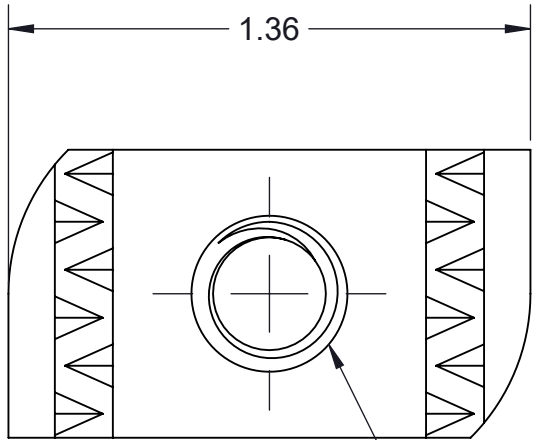


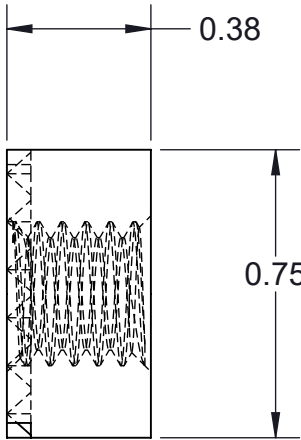
PART NO.
TA38NC-(*)

(*) INSERT MATERIAL/FINISH:
ZN - GALVANIZED
S6 - STAINLESS STEEL 316
S4 - STAINLESS STEEL 304

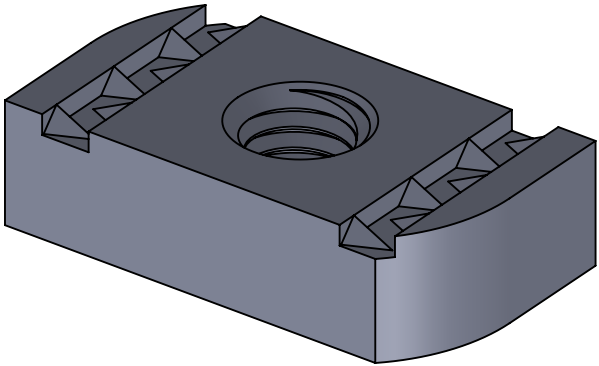


3/8-16 UNC-2B THRU

TOP VIEW




SIDE VIEW



ISOMETRIC VIEW

NOTES:
1) ALL DIMENSIONS SHOWN ARE NOMINAL.
2) DIMENSIONS SHOWN ARE IN INCHES UNLESS OTHERWISE NOTED.
3) SOLD IN BAGS OF 20. BOX QTY: 100 (5 BAGS OF 20).

PROPRIETARY AND CONFIDENTIAL THE INFORMATION CONTAINED IN THIS DRAWING IS THE SOLE PROPERTY OF CT INNOVATIONS. ANY REPRODUCTION IN PART OR AS A WHOLE WITHOUT THE WRITTEN PERMISSION OF CT INNOVATIONS IS PROHIBITED.			
	TITLE: TA38NC-(*) 3/8-16 CHANNEL NUT		
	DRAWN BY/DATE: VA 12JAN2023	SIZE: B	DWG. NO.: CTI-S14020
	APPROVED BY/DATE: JDG 12JAN2024	SCALE: NTS	REV: A
		CAD FILE NAME: TA38NC_A CAD SAVE DATE: Tuesday, February 27, 2024 2:17:11 PM	SHEET: 1 OF 1