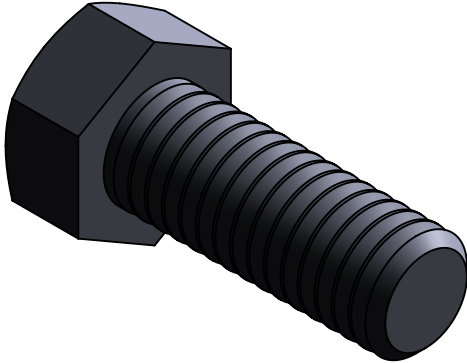
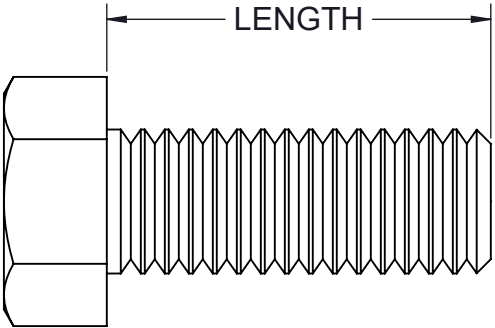


PART NO.	LENGTH (in)
TA38HX100-(*)	1.00

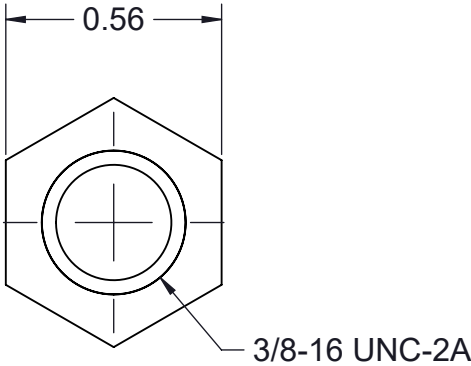
(*) INSERT MATERIAL/FINISH:
ZN - GALVANIZED
S6 - STAINLESS STEEL 316
S4 - STAINLESS STEEL 304



ISOMETRIC VIEW




SIDE VIEW



FRONT VIEW

- NOTES:**
- 1) ALL DIMENSIONS SHOWN ARE NOMINAL.
 - 2) DIMENSIONS SHOWN ARE IN INCHES UNLESS OTHERWISE NOTED.
 - 3) SOLD IN BAGS OF 20. BOX QTY: 100 (5BAGS OF 20).

PROPRIETARY AND CONFIDENTIAL THE INFORMATION CONTAINED IN THIS DRAWING IS THE SOLE PROPERTY OF CT INNOVATIONS. ANY REPRODUCTION IN PART OR AS A WHOLE WITHOUT THE WRITTEN PERMISSION OF CT INNOVATIONS IS PROHIBITED.			
	TITLE: TA38HX100-(*) 3/8-16 X 1 HEX HEAD CAP SCREW		
	DRAWN BY/DATE: DL 12JAN2023	SIZE: B	DWG. NO.: CTI-S14014
	APPROVED BY/DATE: JDG 12JAN2024	SCALE: NTS	REV: B
		CAD FILE NAME: TA38HX100_A CAD SAVE DATE: Tuesday, February 27, 2024 2:16:18 PM	SHEET: 1 OF 1