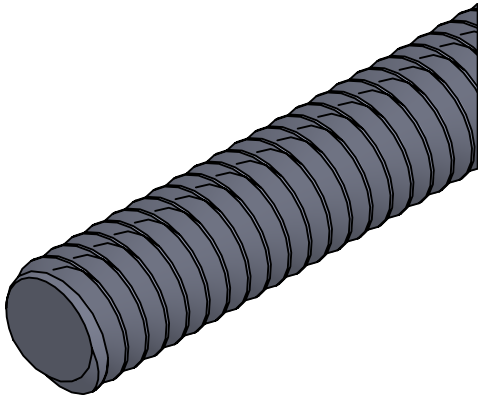
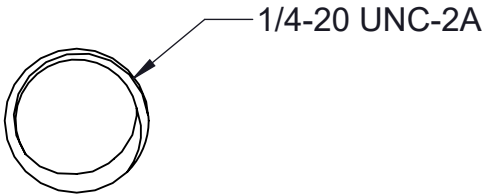


6		5		4		3		2		1	
PART NO.		LENGTH (ft)									
TA25X144-ATR-(*)		12									
(*) INSERT MATERIAL/FINISH: ZN - GALVANIZED S6 - STAINLESS STEEL 316 S4 - STAINLESS STEEL 304											

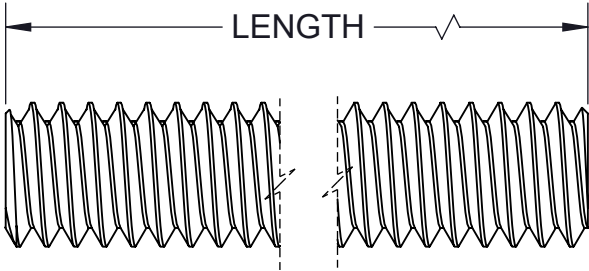
(*) INSERT MATERIAL/FINISH:
ZN - GALVANIZED
S6 - STAINLESS STEEL 316
S4 - STAINLESS STEEL 304



ISOMETRIC VIEW




SECTION VIEW



SIDE VIEW

- NOTES:**
- 1) ALL DIMENSIONS SHOWN ARE NOMINAL.
 - 2) DIMENSIONS SHOWN ARE IN INCHES UNLESS OTHERWISE NOTED.
 - 3) SOLD PER PIECE.

PROPRIETARY AND CONFIDENTIAL THE INFORMATION CONTAINED IN THIS DRAWING IS THE SOLE PROPERTY OF CT INNOVATIONS. ANY REPRODUCTION IN PART OR AS A WHOLE WITHOUT THE WRITTEN PERMISSION OF CT INNOVATIONS IS PROHIBITED.			
		TITLE: TA25X144-ATR-(*) 1/4-20 ALL THREADED ROD	
DRAWN BY/DATE: VA 16MAY2024	SIZE: B	DWG. NO.: CTI-S14001	REV: B
APPROVED BY/DATE:	SCALE: NTS	CAD FILE NAME: TAXXATR_A CAD SAVE DATE: Friday, March 1, 2024 11:30:53 AM	SHEET: 1 OF 1