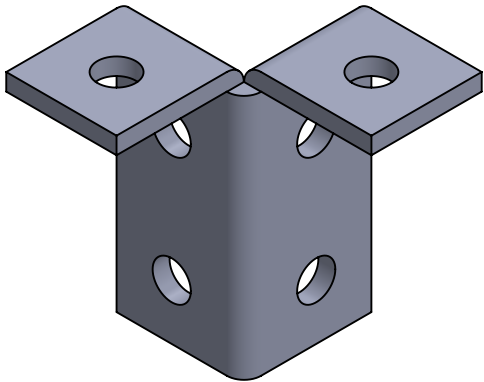
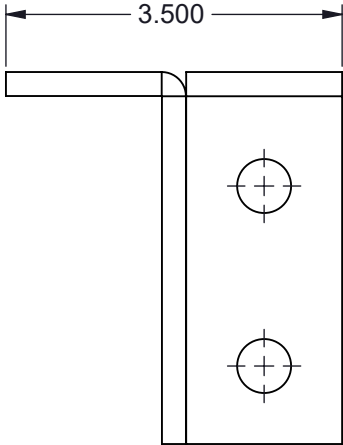
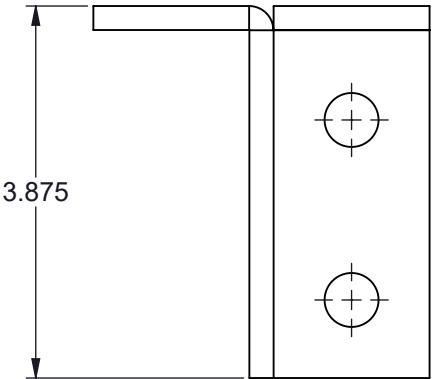
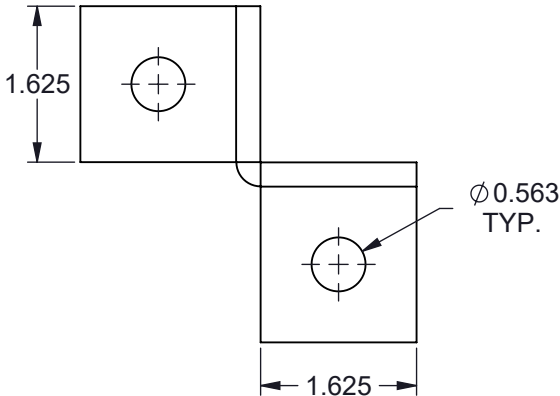



TF509WF-(*) SIX HOLE CORNER WING FITTING

(*) INSERT MATERIAL/FINISH:
ZN - GALVANIZED
HD - HOT DIP
S6 - STAINLESS STEEL 316
S4 - STAINLESS STEEL 304
AL - ALUMINUM



ISOMETRIC VIEW

- NOTES:**
- 1) ALL DIMENSIONS SHOWN ARE NOMINAL.
 - 2) DIMENSIONS SHOWN ARE IN INCHES UNLESS OTHERWISE NOTED.

| | | | |
|---|--|--|--------------------------------|
| PROPRIETARY AND CONFIDENTIAL THE INFORMATION CONTAINED IN THIS DRAWING IS THE SOLE PROPERTY OF CT INNOVATIONS. ANY REPRODUCTION IN PART OR AS A WHOLE WITHOUT THE WRITTEN PERMISSION OF CT INNOVATIONS IS PROHIBITED. | | | |
|  | | TITLE: TF509WF-(*) SIX HOLE CORNER WING FITTING | |
| DRAWN BY/DATE: DL 22JAN2024 | | SIZE: B | DWG. NO.: CTI-S12068 |
| APPROVED BY/DATE: JDG 02FEB2024 | | SCALE: NTS | REV: A |
| | | CAD FILE NAME: TF509WF_A CAD SAVE DATE: Monday, March 4, 2024 10:45:39 PM | SHEET: 1 OF 1 |