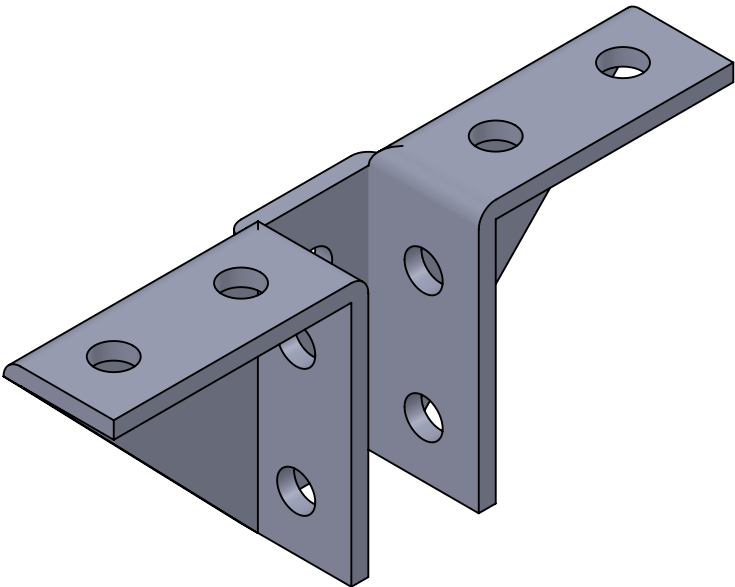
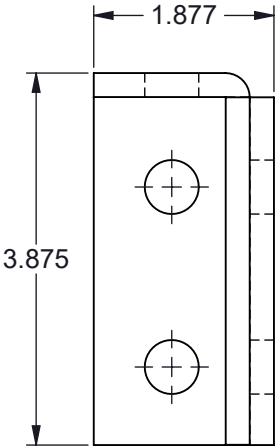
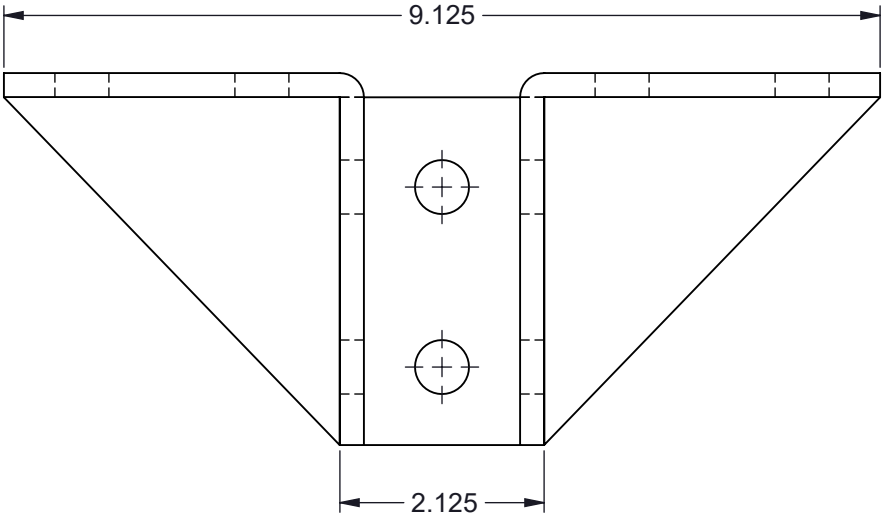
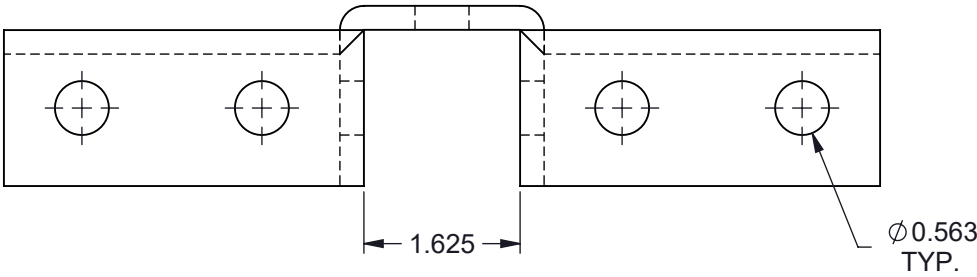



TF504WF-(\*) TEN HOLE GUSSETED TWO SIDED WING FITTING

- (\*) INSERT MATERIAL/FINISH:  
ZN - GALVANIZED  
HD - HOT DIP  
S6 - STAINLESS STEEL 316  
S4 - STAINLESS STEEL 304  
AL - ALUMINUM



ISOMETRIC VIEW

- NOTES:**  
1) ALL DIMENSIONS SHOWN ARE NOMINAL.  
2) DIMENSIONS SHOWN ARE IN INCHES UNLESS OTHERWISE NOTED.

PROPRIETARY AND CONFIDENTIAL THE INFORMATION CONTAINED IN THIS DRAWING IS THE SOLE PROPERTY OF CT INNOVATIONS. ANY REPRODUCTION IN PART OR AS A WHOLE WITHOUT THE WRITTEN PERMISSION OF CT INNOVATIONS IS PROHIBITED.			
		TITLE: <b>TF504WF-(*) TEN HOLE GUSSETED TWO SIDED WING FITTING</b>	
DRAWN BY/DATE: DL 22JAN2024	SIZE: <b>B</b>	DWG. NO.: <b>CTI-S12063</b>	REV: <b>A</b>
APPROVED BY/DATE: JDG 02FEB2024	SCALE: <b>NTS</b>	CAD FILE NAME: TF504WF_A CAD SAVE DATE: Monday, March 4, 2024 10:43:34 PM	SHEET: <b>1 OF 1</b>