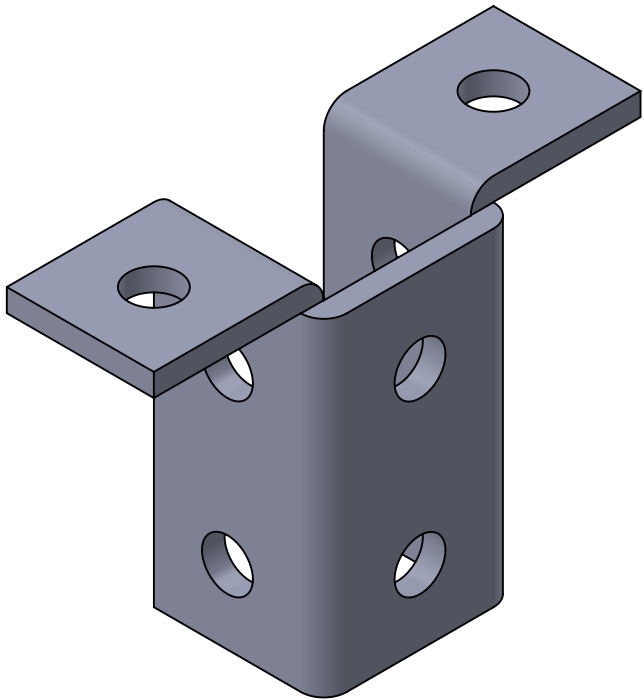
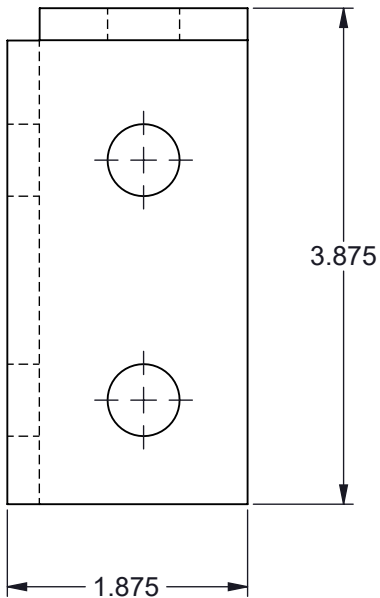
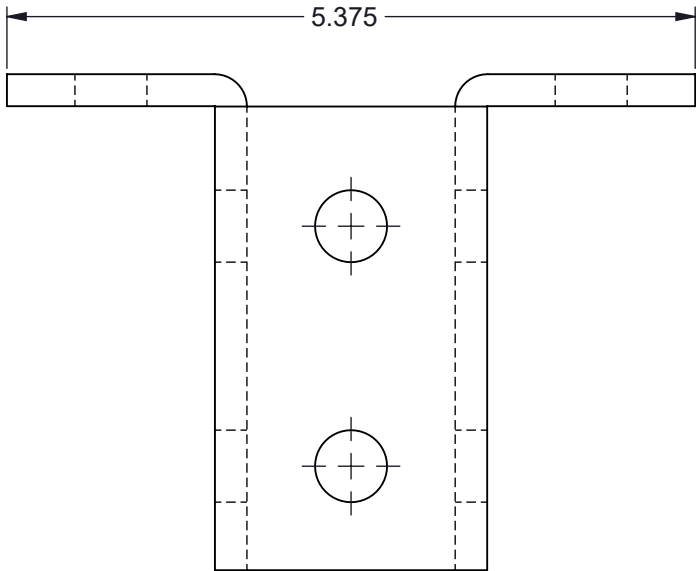
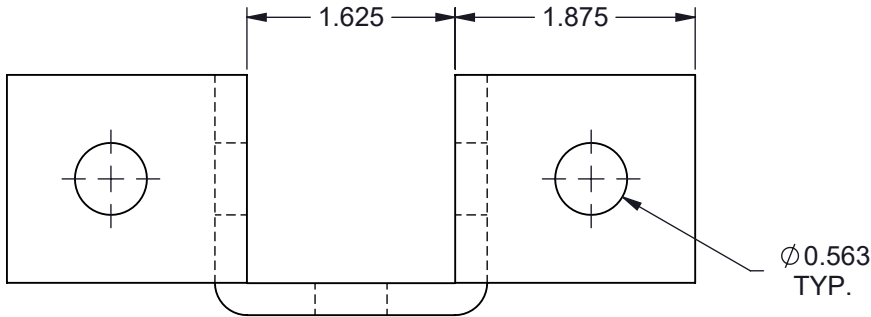


TF503WF-(*) EIGHT HOLE TWO SIDED WING FITTING


- (*) INSERT MATERIAL/FINISH:
ZN - GALVANIZED
HD - HOT DIP
S6 - STAINLESS STEEL 316
S4 - STAINLESS STEEL 304
AL - ALUMINUM



ISOMETRIC VIEW

NOTES:

- 1) ALL DIMENSIONS SHOWN ARE NOMINAL.
2) DIMENSIONS SHOWN ARE IN INCHES UNLESS OTHERWISE NOTED.

PROPRIETARY AND CONFIDENTIAL THE INFORMATION CONTAINED IN THIS DRAWING IS THE SOLE PROPERTY OF CT INNOVATIONS. ANY REPRODUCTION IN PART OR AS A WHOLE WITHOUT THE WRITTEN PERMISSION OF CT INNOVATIONS IS PROHIBITED.			
	TITLE: TF503WF-(*) EIGHT HOLE TWO SIDED WING FITTING		
	DRAWN BY/DATE: DL 22JAN2024	SIZE: B	DWG. NO.: CTI-S12062
	APPROVED BY/DATE: JDG 02FEB2024	SCALE: NTS	REV: A
		CAD FILE NAME: TF503WF_A CAD SAVE DATE: Monday, March 4, 2024 10:43:14 PM	SHEET: 1 OF 1