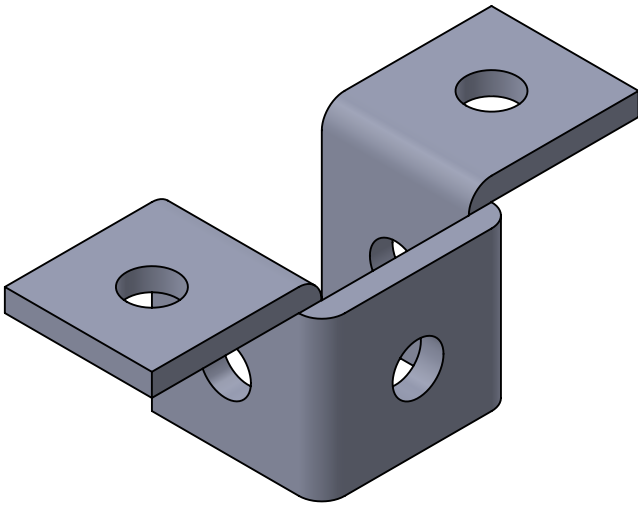
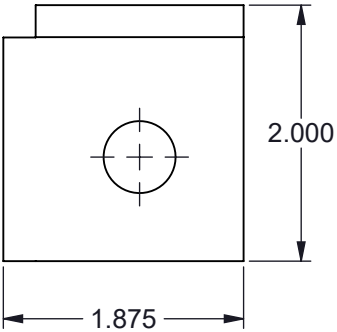
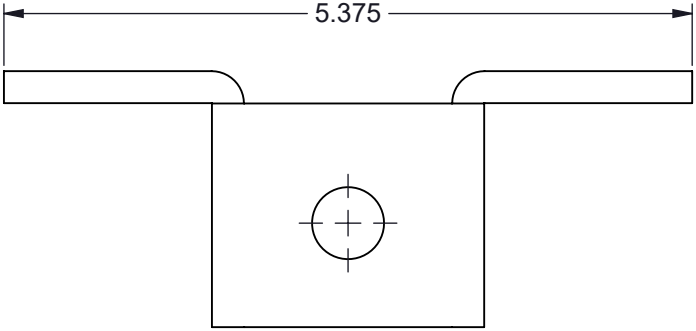
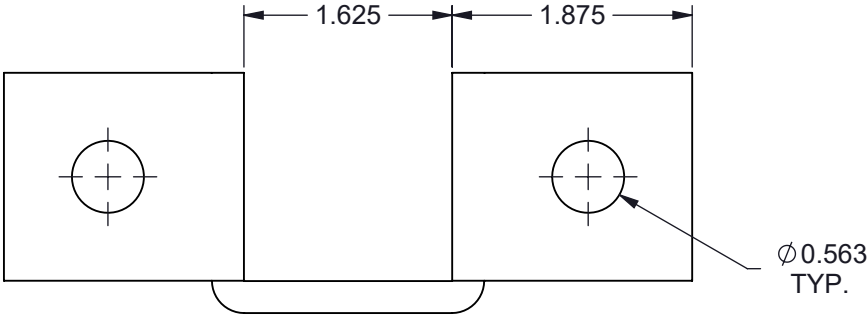



TF501WF-(*) FIVE HOLE TWO SIDED WING FITTING

(*) INSERT MATERIAL/FINISH:
ZN - GALVANIZED
HD - HOT DIP
S6 - STAINLESS STEEL 316
S4 - STAINLESS STEEL 304
AL - ALUMINUM



ISOMETRIC VIEW

- NOTES:**
- 1) ALL DIMENSIONS SHOWN ARE NOMINAL.
 - 2) DIMENSIONS SHOWN ARE IN INCHES UNLESS OTHERWISE NOTED.

PROPRIETARY AND CONFIDENTIAL.THE INFORMATION CONTAINED IN THIS DRAWING IS THE SOLE PROPERTY OF CT INNOVATIONS. ANY REPRODUCTION IN PART OR AS A WHOLE WITHOUT THE WRITTEN PERMISSION OF CT INNOVATIONS IS PROHIBITED.			
	TITLE: TF501WF-(*) FIVE HOLE TWO SIDED WING FITTING		
	DRAWN BY/DATE: DL 22JAN2024	SIZE: B	DWG. NO.: CTI-S12060
	APPROVED BY/DATE: JDG 02FEB2024	SCALE: NTS	REV: A SHEET: 1 OF 1
CAD FILE NAME: TF501WF_A		CAD SAVE DATE: Monday, March 4, 2024 10:42:27 PM	