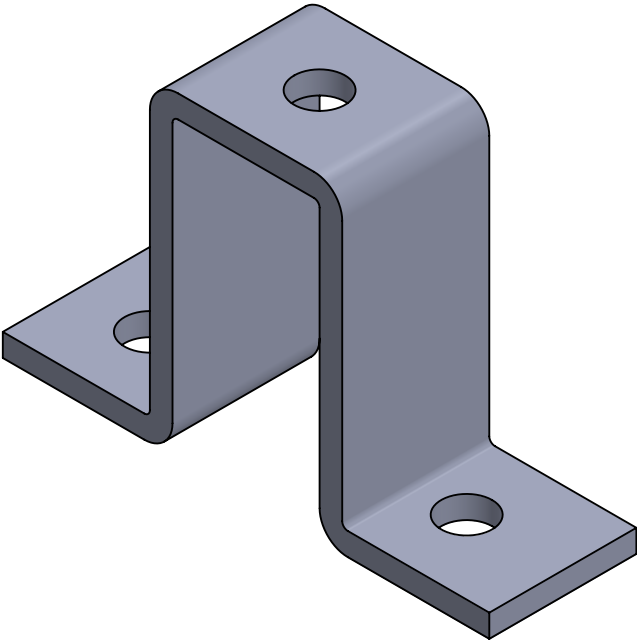
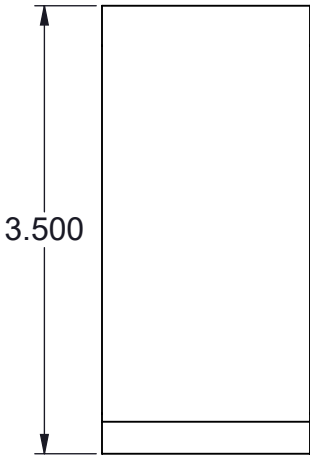
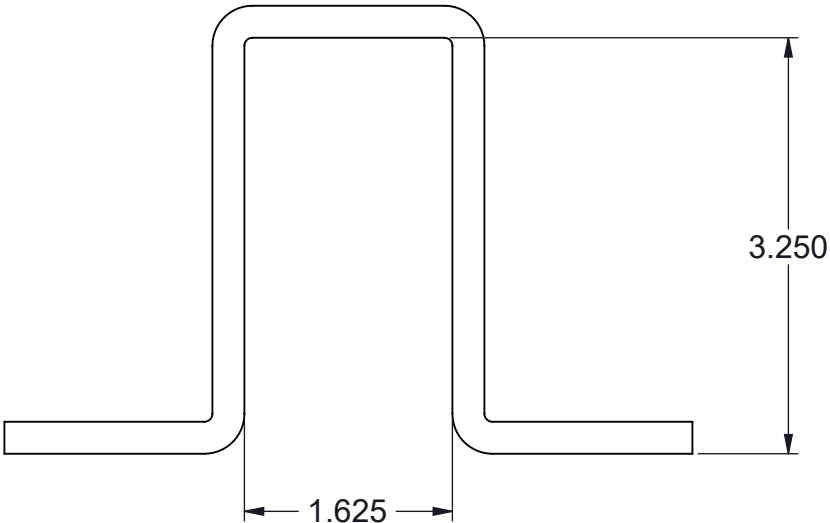
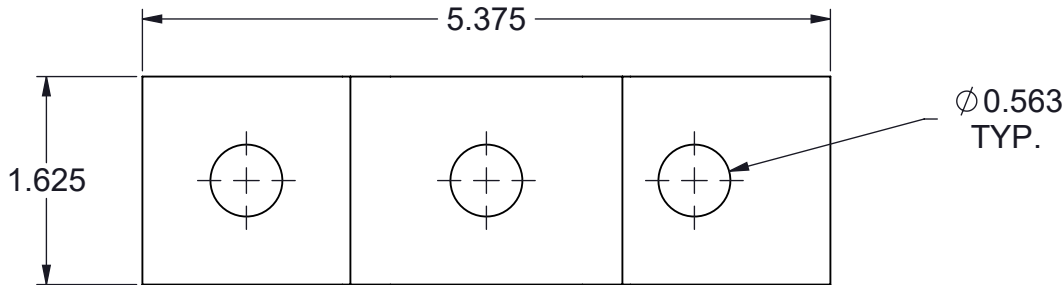



TF402UF-(\*) TWO HOLE Z FITTING SUPPORT

- (\*) INSERT MATERIAL/FINISH:
- ZN - GALVANIZED
  - HD - HOT DIP
  - S6 - STAINLESS STEEL 316
  - S4 - STAINLESS STEEL 304
  - AL - ALUMINUM



ISOMETRIC VIEW

- NOTES:**
- 1) ALL DIMENSIONS SHOWN ARE NOMINAL.
  - 2) DIMENSIONS SHOWN ARE IN INCHES UNLESS OTHERWISE NOTED.

PROPRIETARY AND CONFIDENTIAL THE INFORMATION CONTAINED IN THIS DRAWING IS THE SOLE PROPERTY OF CT INNOVATIONS. ANY REPRODUCTION IN PART OR AS A WHOLE WITHOUT THE WRITTEN PERMISSION OF CT INNOVATIONS IS PROHIBITED.			
		TITLE: <b>TF402UF-(*) THREE HOLE U FITTING SUPPORT</b>	
DRAWN BY/DATE: DL 19JAN2024		SIZE: <b>B</b>	DWG. NO.: <b>CTI-S12051</b>
APPROVED BY/DATE: JDG 19JAN2024		SCALE: <b>NTS</b>	REV: <b>A</b>
		CAD FILE NAME: TF402UF_A CAD SAVE DATE: Monday, March 4, 2024 10:39:15 PM	SHEET: <b>1 OF 1</b>