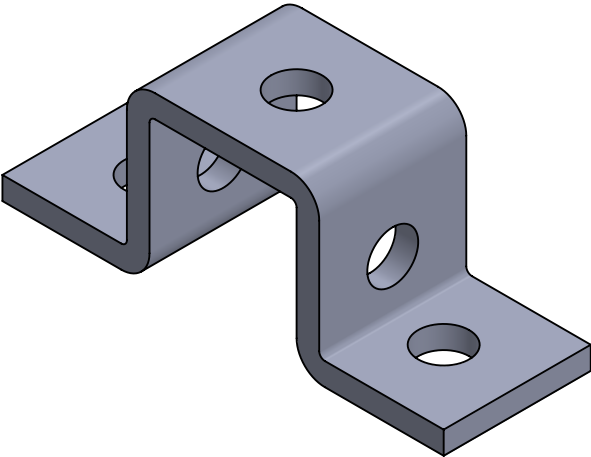
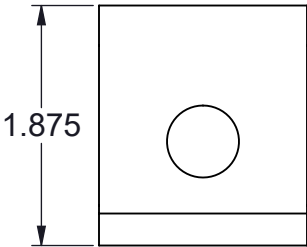
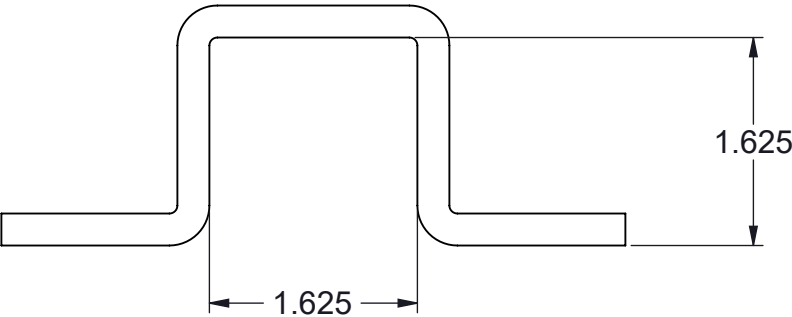
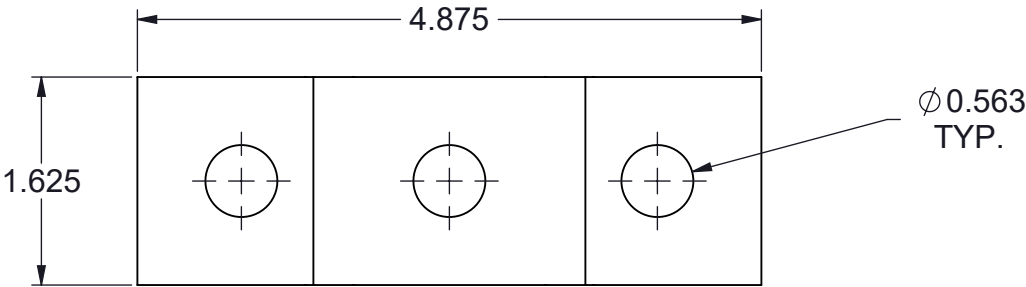



TF401UF-(*) FIVE HOLE U FITTING SUPPORT

(*) INSERT MATERIAL/FINISH:
ZN - GALVANIZED
HD - HOT DIP
S6 - STAINLESS STEEL 316
S4 - STAINLESS STEEL 304
AL - ALUMINUM



ISOMETRIC VIEW

NOTES:
1) ALL DIMENSIONS SHOWN ARE NOMINAL.
2) DIMENSIONS SHOWN ARE IN INCHES UNLESS OTHERWISE NOTED.

PROPRIETARY AND CONFIDENTIAL THE INFORMATION CONTAINED IN THIS DRAWING IS THE SOLE PROPERTY OF CT INNOVATIONS. ANY REPRODUCTION IN PART OR AS A WHOLE WITHOUT THE WRITTEN PERMISSION OF CT INNOVATIONS IS PROHIBITED.			
		TITLE: TF401UF-(*) FIVE HOLE U FITTING SUPPORT	
DRAWN BY/DATE: DL 19JAN2024	SIZE: B	DWG. NO.: CTI-S12050	REV: A
APPROVED BY/DATE: JDG 19JAN2024	SCALE: NTS	CAD FILE NAME: TF401UF_A CAD SAVE DATE: Monday, March 4, 2024 10:38:46 PM	SHEET: 1 OF 1