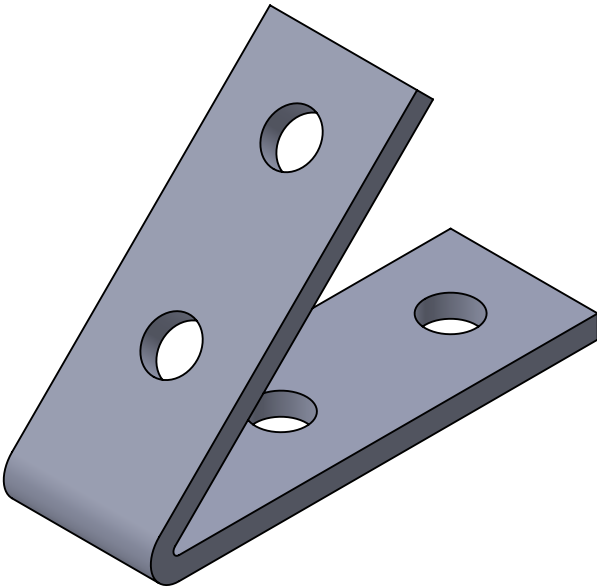
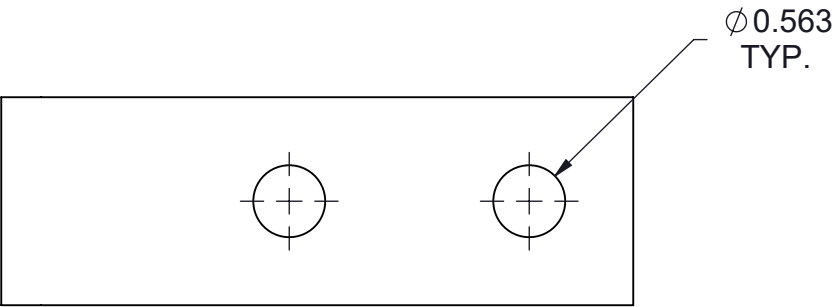
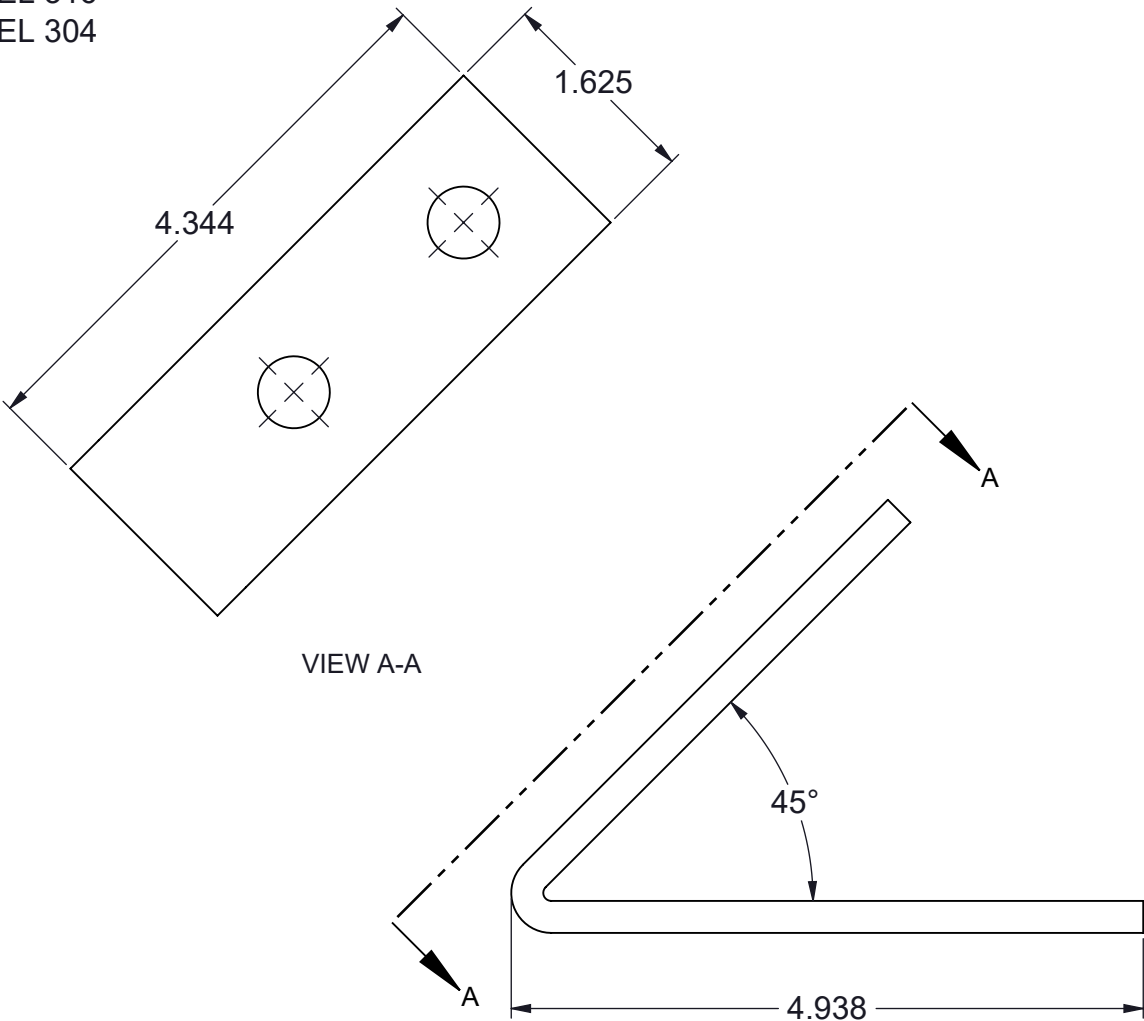
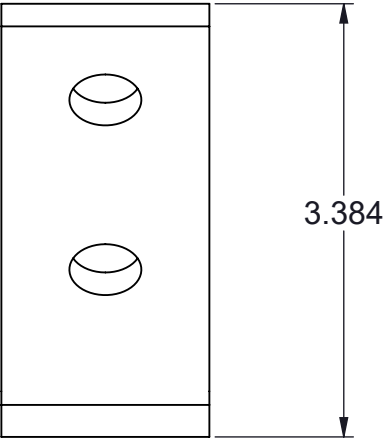


TF210AF-(\*) FOUR HOLE 45DEG CLOSE ANGLE FITTING


(\*) INSERT MATERIAL/FINISH:  
ZN - GALVANIZED  
HD - HOT DIP  
S6 - STAINLESS STEEL 316  
S4 - STAINLESS STEEL 304  
AL - ALUMINUM



ISOMETRIC VIEW



**NOTES:**  
1) ALL DIMENSIONS SHOWN ARE NOMINAL.  
2) DIMENSIONS SHOWN ARE IN INCHES UNLESS OTHERWISE NOTED.

PROPRIETARY AND CONFIDENTIAL THE INFORMATION CONTAINED IN THIS DRAWING IS THE SOLE PROPERTY OF CT INNOVATIONS. ANY REPRODUCTION IN PART OR AS A WHOLE WITHOUT THE WRITTEN PERMISSION OF CT INNOVATIONS IS PROHIBITED.			
		TITLE: <b>TF210AF-(*) FOUR HOLE 45DEG CLOSE ANGLE FITTING</b>	
DRAWN BY/DATE: DL 19JAN2024	SIZE: <b>B</b>	DWG. NO.: <b>CTI-S12043</b>	REV: <b>A</b>
APPROVED BY/DATE: JDG 19JAN2024	SCALE: <b>NTS</b>	CAD FILE NAME: TF210AF_A CAD SAVE DATE: Monday, March 4, 2024 10:26:07 PM	SHEET: <b>1 OF 1</b>