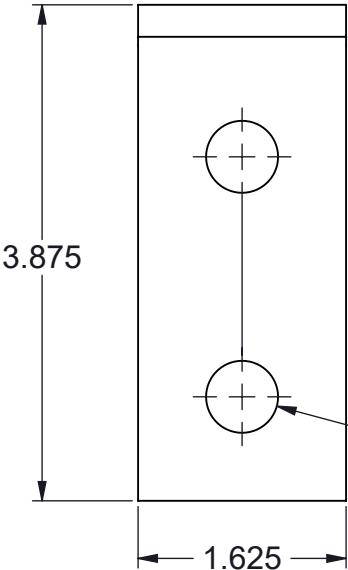
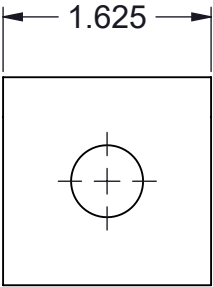
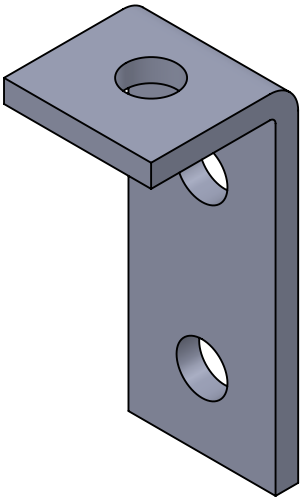
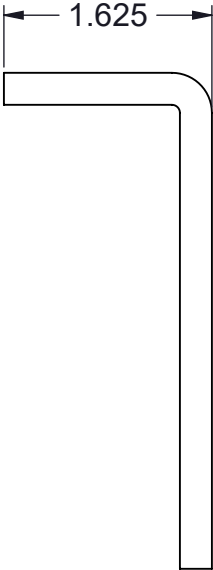


TF204AF-(*) THREE HOLE 90DEG END CONNECTOR ANGLE FITTING

(*) INSERT MATERIAL/FINISH:
ZN - GALVANIZED
HD - HOT DIP
S6 - STAINLESS STEEL 316
S4 - STAINLESS STEEL 304
AL - ALUMINUM




Ø0.563
TYP.



ISOMETRIC VIEW

NOTES:
1) ALL DIMENSIONS SHOWN ARE NOMINAL.
2) DIMENSIONS SHOWN ARE IN INCHES UNLESS OTHERWISE NOTED.

PROPRIETARY AND CONFIDENTIAL THE INFORMATION CONTAINED IN THIS DRAWING IS THE SOLE PROPERTY OF CT INNOVATIONS. ANY REPRODUCTION IN PART OR AS A WHOLE WITHOUT THE WRITTEN PERMISSION OF CT INNOVATIONS IS PROHIBITED.			
	TITLE: TF204AF-(*) THREE HOLE 90DEG END CONNECTOR ANGLE FITTING		
	DRAWN BY/DATE: DL 18JAN2024	SIZE: B	DWG. NO.: CTI-S12040
	APPROVED BY/DATE: JDG 19JAN2024	SCALE: NTS	REV: A
		CAD FILE NAME: TF204AF_A CAD SAVE DATE: Monday, March 4, 2024 10:24:19 PM	SHEET: 1 OF 1