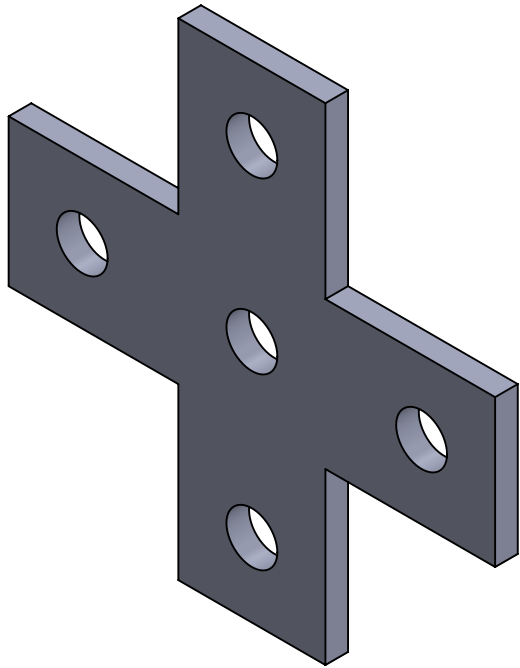
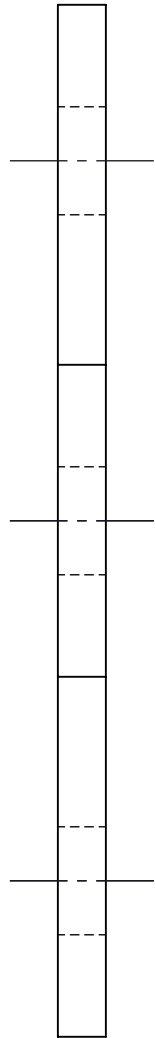
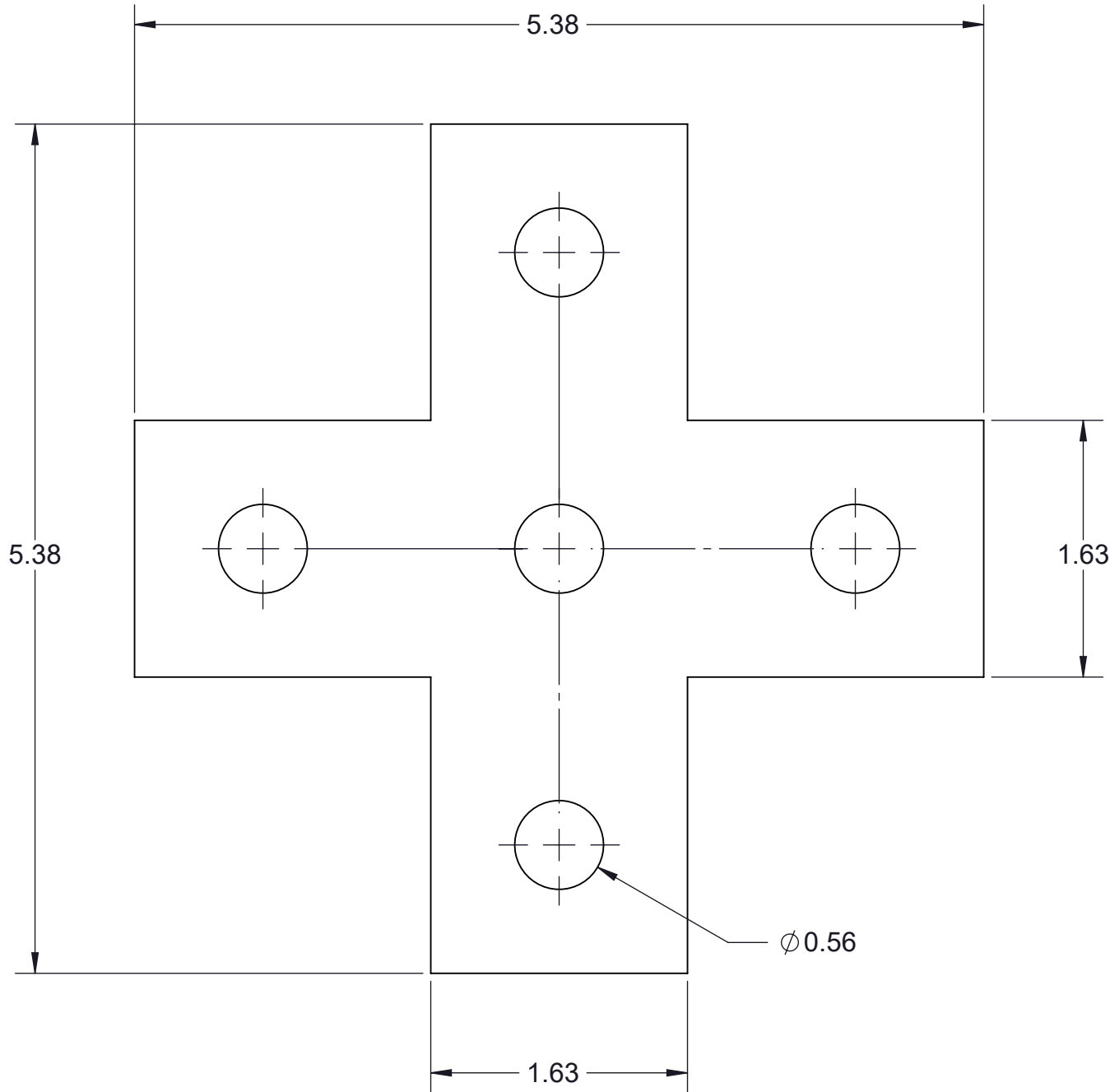



TF110FP-(\*) FIVE HOLE FLAT PLATE CROSS FITTING

(\*) INSERT MATERIAL/FINISH:  
ZN - GALVANIZED  
HD - HOT DIP  
S6 - STAINLESS STEEL 316  
S4 - STAINLESS STEEL 304  
AL - ALUMINUM



ISOMETRIC VIEW

**NOTES:**  
1) ALL DIMENSIONS SHOWN ARE NOMINAL.  
2) DIMENSIONS SHOWN ARE IN INCHES UNLESS OTHERWISE NOTED.

PROPRIETARY AND CONFIDENTIAL THE INFORMATION CONTAINED IN THIS DRAWING IS THE SOLE PROPERTY OF CT INNOVATIONS. ANY REPRODUCTION IN PART OR AS A WHOLE WITHOUT THE WRITTEN PERMISSION OF CT INNOVATIONS IS PROHIBITED.			
		TITLE: <b>TF104FP-(*) FIVE HOLE FLAT PLATE CROSS FITTING</b>	
DRAWN BY/DATE: LW 19DEC2023	SIZE: <b>B</b>	DWG. NO.: <b>CTI-S12005</b>	REV: <b>B</b>
APPROVED BY/DATE: JDG 05JAN2024	SCALE: <b>NTS</b>	CAD FILE NAME: CTI-S12037_A CAD SAVE DATE: Monday, March 4, 2024 10:21:07 PM	SHEET: <b>1 OF 1</b>