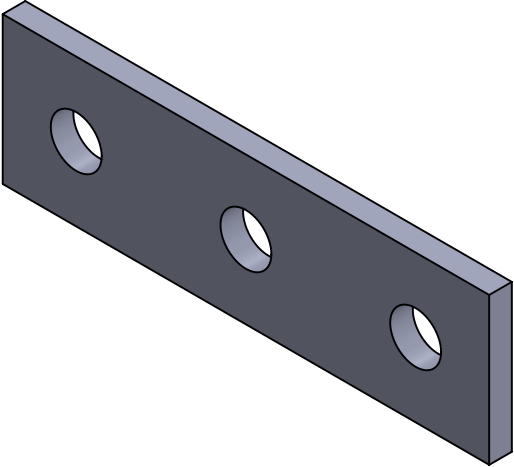
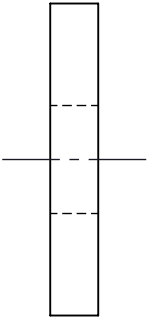
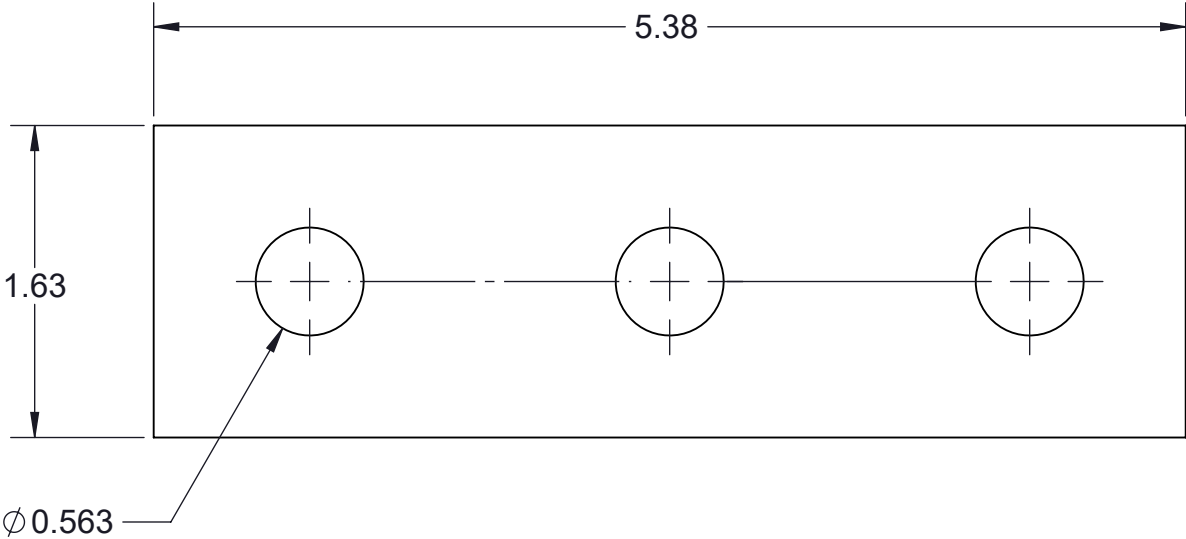



TF101FP-(*) THREE HOLE FLAT PLATE SPLICE FITTING

- (*) INSERT MATERIAL/FINISH:
ZN - GALVANIZED
HD - HOT DIP
S6 - STAINLESS STEEL 316
S4 - STAINLESS STEEL 304
AL - ALUMINUM



ISOMETRIC VIEW

- NOTES:**
1) ALL DIMENSIONS SHOWN ARE NOMINAL.
2) DIMENSIONS SHOWN ARE IN INCHES UNLESS OTHERWISE NOTED.

PROPRIETARY AND CONFIDENTIAL THE INFORMATION CONTAINED IN THIS DRAWING IS THE SOLE PROPERTY OF CT INNOVATIONS. ANY REPRODUCTION IN PART OR AS A WHOLE WITHOUT THE WRITTEN PERMISSION OF CT INNOVATIONS IS PROHIBITED.			
		TITLE: TF101FP-(*) THREE HOLE FLAT PLATE SPLICE FITTING	
DRAWN BY/DATE: DL 03JAN2024	SIZE: B	DWG. NO.: CTI-S12033	REV: A
APPROVED BY/DATE:	SCALE: NTS	CAD FILE NAME: CTI-S12033_A CAD SAVE DATE: Monday, March 4, 2024 10:17:48 PM	SHEET: 1 OF 1