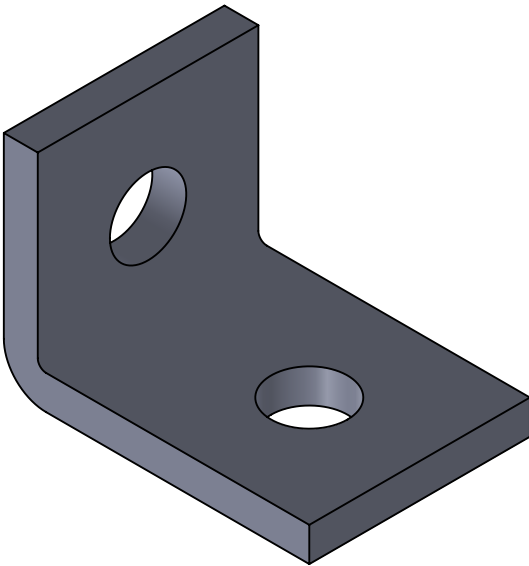
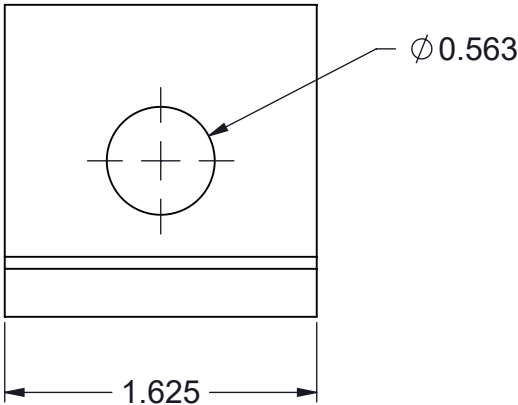
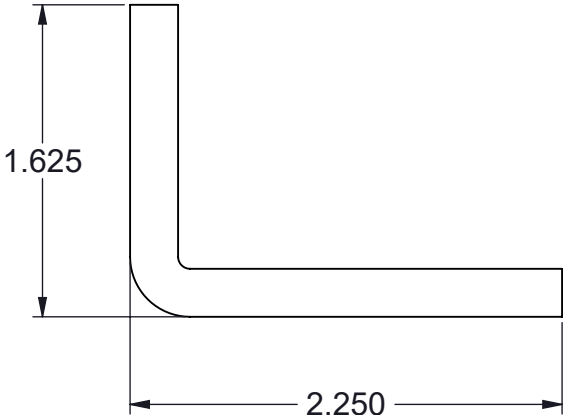
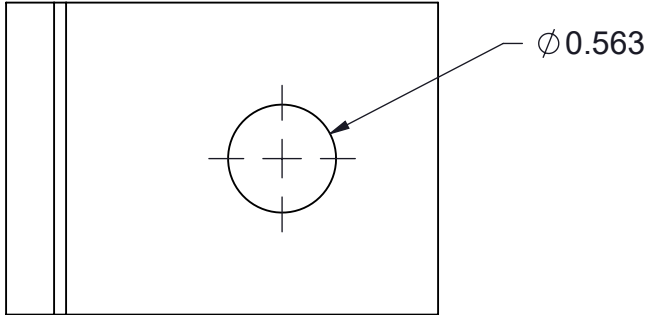



TF200AF-(*) TWO HOLE 90DEG RACK ANGLE FITTING

(*) INSERT MATERIAL/FINISH:
ZN - GALVANIZED
HD - HOT DIP
S6 - STAINLESS STEEL 316
S4 - STAINLESS STEEL 304
AL - ALUMINUM



ISOMETRIC VIEW

NOTES:
1) ALL DIMENSIONS SHOWN ARE NOMINAL.
2) DIMENSIONS SHOWN ARE IN INCHES UNLESS OTHERWISE NOTED.

PROPRIETARY AND CONFIDENTIAL THE INFORMATION CONTAINED IN THIS DRAWING IS THE SOLE PROPERTY OF CT INNOVATIONS. ANY REPRODUCTION IN PART OR AS A WHOLE WITHOUT THE WRITTEN PERMISSION OF CT INNOVATIONS IS PROHIBITED.			
		TITLE: TF200AF-(*) TWO HOLE 90DEG RACK ANGLE FITTING	
DRAWN BY/DATE: DL 30DEC2023	SIZE: B	DWG. NO.: CTI-S12027	REV: A
APPROVED BY/DATE: JDG 12JAN2024	SCALE: NTS	CAD FILE NAME: TF200AF_A CAD SAVE DATE: Monday, March 4, 2024 10:16:39 PM	SHEET: 1 OF 1