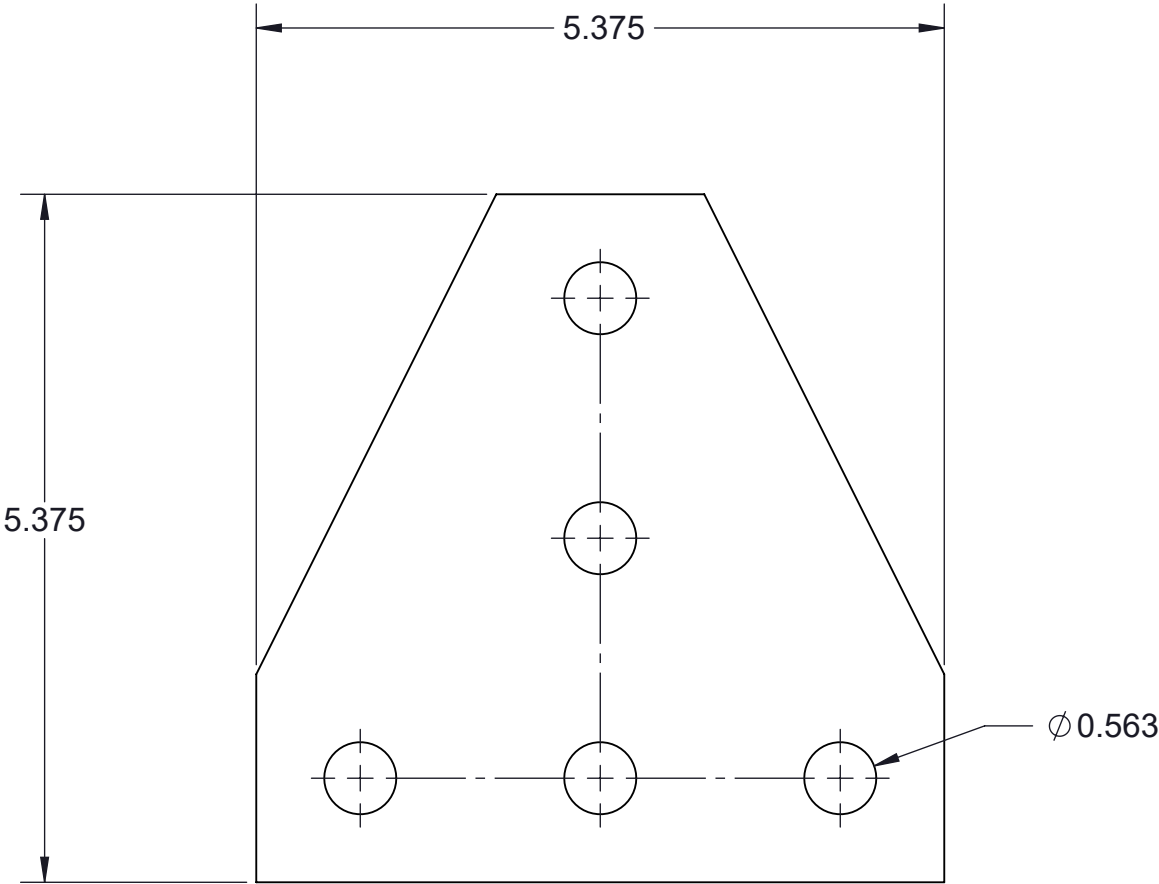
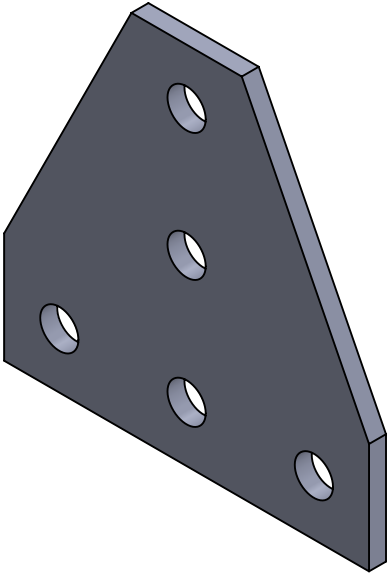


TF106FP- (*) FIVE HOLE FLAT PLATE GUSSET CORNER FITTING

(*) INSERT MATERIAL/FINISH:
ZN - GALVANIZED
HD - HOT DIP
S6 - STAINLESS STEEL 316
S4 - STAINLESS STEEL 304
AL - ALUMINUM




PLAN VIEW



ISOMETRIC VIEW

NOTES:
1) ALL DIMENSIONS SHOWN ARE NOMINAL.
2) DIMENSIONS SHOWN ARE IN INCHES UNLESS OTHERWISE NOTED.

PROPRIETARY AND CONFIDENTIAL THE INFORMATION CONTAINED IN THIS DRAWING IS THE SOLE PROPERTY OF CT INNOVATIONS. ANY REPRODUCTION IN PART OR AS A WHOLE WITHOUT THE WRITTEN PERMISSION OF CT INNOVATIONS IS PROHIBITED.			
		TITLE: TF106FP- (*) FIVE HOLE FLAT PLATE GUSSET CORNER FITTING	
DRAWN BY/DATE: DL 04JAN2024		SIZE: B	DWG. NO.: CTI-S12019
APPROVED BY/DATE: JDG 12JAN2024		SCALE: NTS	REV: A
		CAD FILE NAME: TF106FP_A CAD SAVE DATE: Monday, March 4, 2024 10:03:00 PM	SHEET: 1 OF 1