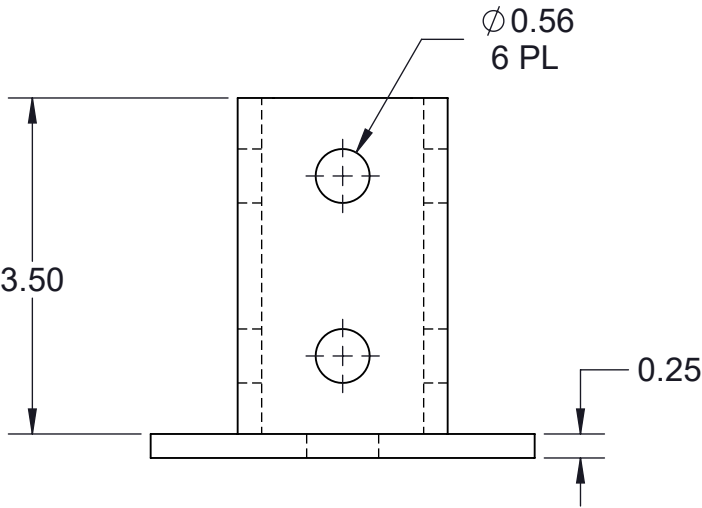
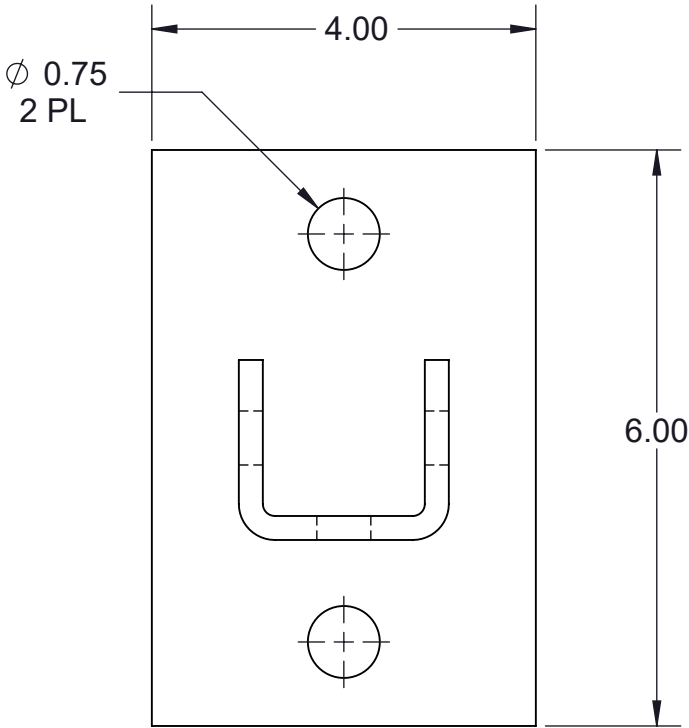


TF158PB-V-(\*) EIGHT HOLE POST BASE SINGLE CHANNEL FITTING

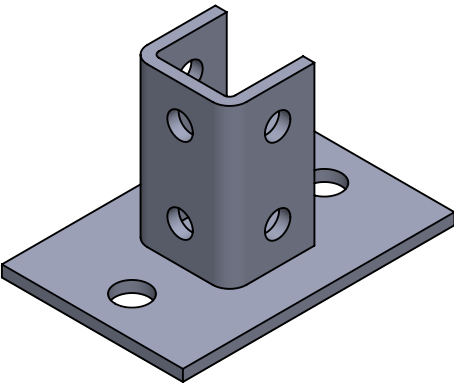
(\*) INSERT MATERIAL/FINISH:  
ZN - GALVANIZED  
HD - HOT DIP  
S6 - STAINLESS STEEL 316  
S4 - STAINLESS STEEL 304  
AL - ALUMINUM



FRONT VIEW




TOP VIEW



ISOMETRIC VIEW

**NOTES:**  
1) ALL DIMENSIONS SHOWN ARE NOMINAL.  
2) DIMENSIONS SHOWN ARE IN INCHES UNLESS OTHERWISE NOTED.

PROPRIETARY AND CONFIDENTIAL THE INFORMATION CONTAINED IN THIS DRAWING IS THE SOLE PROPERTY OF CT INNOVATIONS. ANY REPRODUCTION IN PART OR AS A WHOLE WITHOUT THE WRITTEN PERMISSION OF CT INNOVATIONS IS PROHIBITED.			
		TITLE: <b>TF158PB-V-(*) EIGHT HOLE POST BASE SINGLE CHANNEL FITTING</b>	
DRAWN BY/DATE: LW 09JAN2024	SIZE: <b>B</b>	DWG. NO.: <b>CTI-S12017</b>	REV: <b>A</b>
APPROVED BY/DATE: JDG 12JAN2024	SCALE: <b>NTS</b>	CAD FILE NAME: CTI-S12017_A CAD SAVE DATE: Monday, March 4, 2024 10:02:08 PM	SHEET: <b>1 OF 1</b>