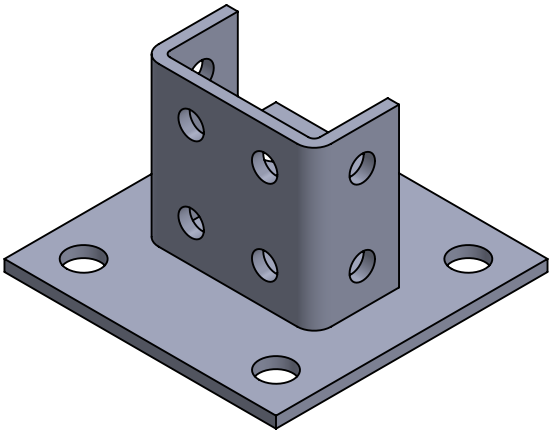
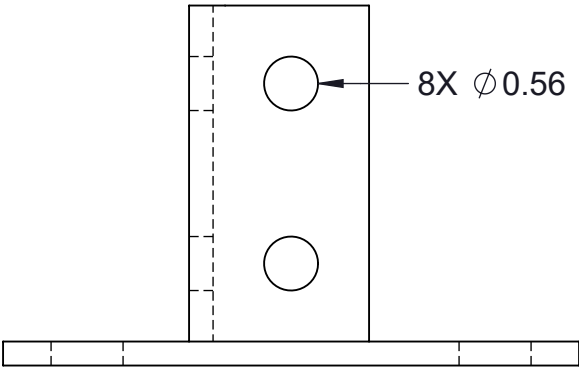
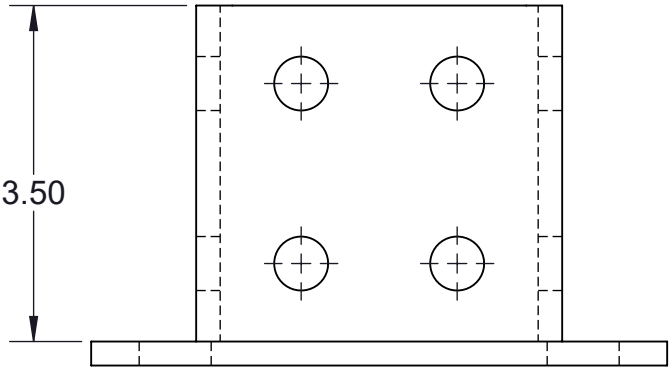
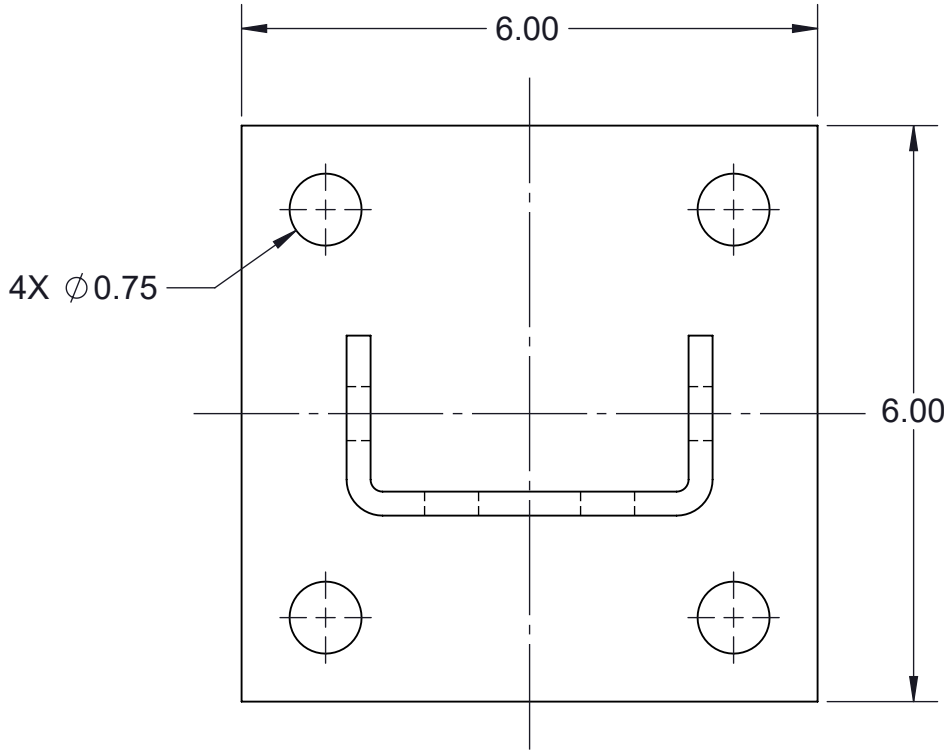


TF158HPBSQ-T-(\*) TWELVE HOLE POST BASE DOUBLE CHANNEL FITTING


- (\*) INSERT MATERIAL/FINISH:  
ZN - GALVANIZED  
HD - HOT DIP  
S6 - STAINLESS STEEL 316  
S4 - STAINLESS STEEL 304  
AL - ALUMINUM



ISOMETRIC VIEW



- NOTES:**  
1) ALL DIMENSIONS SHOWN ARE NOMINAL.  
2) DIMENSIONS SHOWN ARE IN INCHES UNLESS OTHERWISE NOTED.

PROPRIETARY AND CONFIDENTIAL THE INFORMATION CONTAINED IN THIS DRAWING IS THE SOLE PROPERTY OF CT INNOVATIONS. ANY REPRODUCTION IN PART OR AS A WHOLE WITHOUT THE WRITTEN PERMISSION OF CT INNOVATIONS IS PROHIBITED.			
		TITLE: <b>TF158HPBSQ-T-(*) TWELVE HOLE POST BASE DOUBLE CHANNEL FITTING</b>	
DRAWN BY/DATE: LW 09JAN2024	SIZE: <b>B</b>	DWG. NO.: <b>CTI-S12010</b>	REV: <b>B</b>
APPROVED BY/DATE: JDG 12JAN2024	SCALE: <b>NTS</b>	CAD FILE NAME: TF158HBSQ_A CAD SAVE DATE: Monday, March 4, 2024 9:51:00 PM	SHEET: <b>1 OF 1</b>