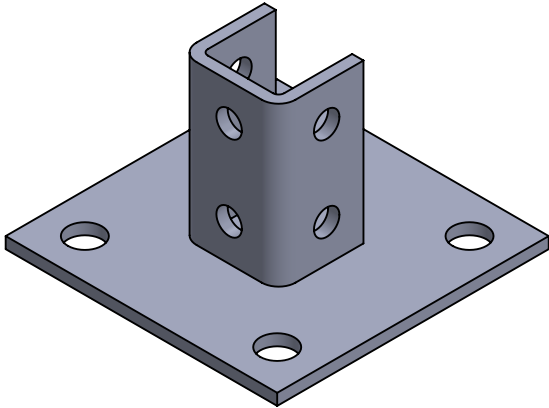
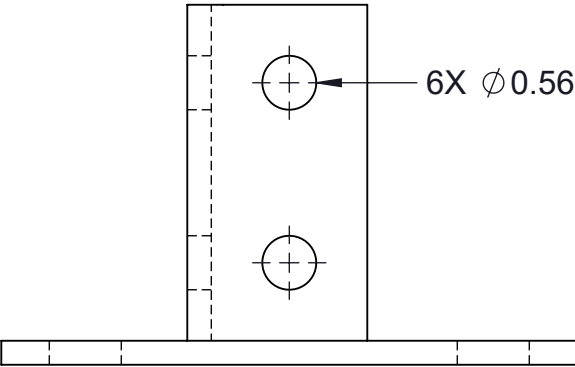
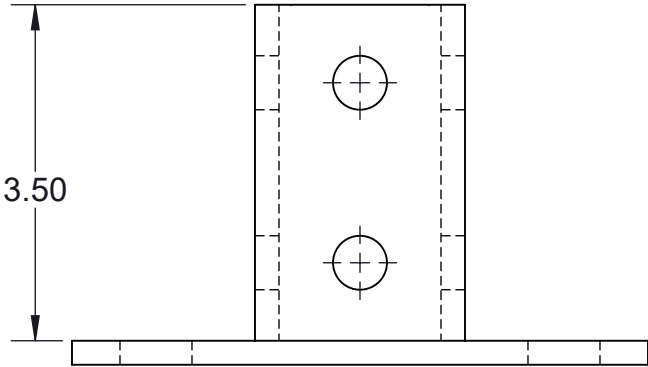
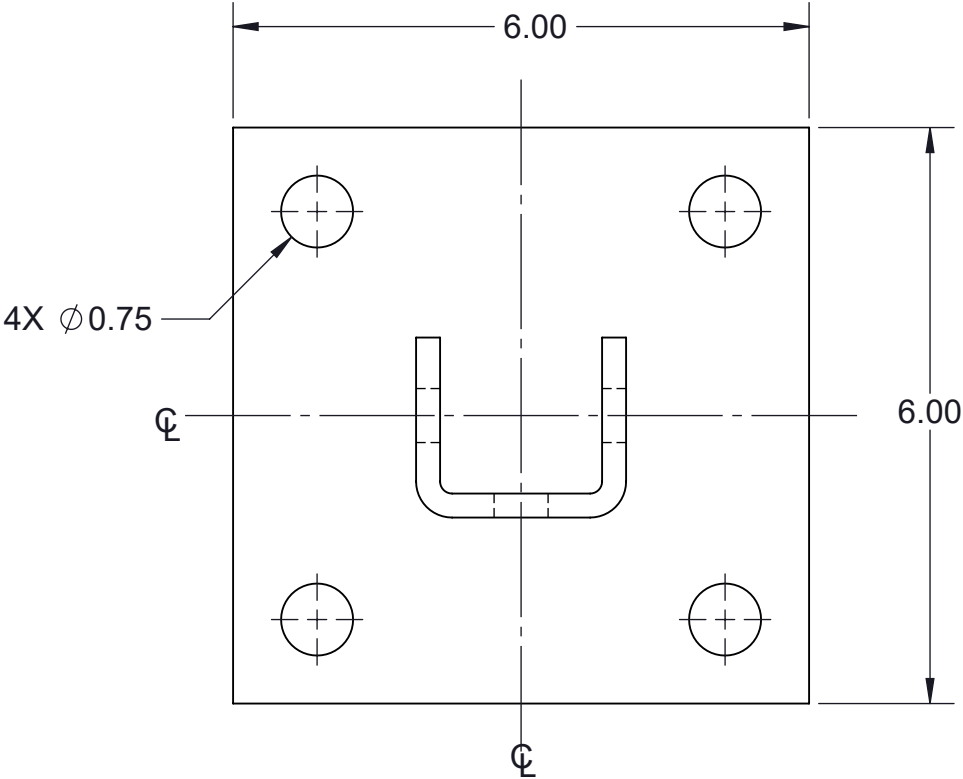


TF158PBSQ-T-(*) TEN HOLE POST BASE SINGLE CHANNEL FITTING


(*) INSERT MATERIAL/FINISH:
ZN - GALVANIZED
HD - HOT DIP
S6 - STAINLESS STEEL 316
S4 - STAINLESS STEEL 304
AL - ALUMINUM



ISOMETRIC VIEW



NOTES:
1) ALL DIMENSIONS SHOWN ARE NOMINAL.
2) DIMENSIONS SHOWN ARE IN INCHES UNLESS OTHERWISE NOTED.

PROPRIETARY AND CONFIDENTIAL THE INFORMATION CONTAINED IN THIS DRAWING IS THE SOLE PROPERTY OF CT INNOVATIONS. ANY REPRODUCTION IN PART OR AS A WHOLE WITHOUT THE WRITTEN PERMISSION OF CT INNOVATIONS IS PROHIBITED.			
		TITLE: TF158PBSQ-T-(*) TEN HOLE POST BASE SINGLE CHANNEL FITTING	
DRAWN BY/DATE: LW 09JAN2024	SIZE: B	DWG. NO.: CTI-S12009	REV: B
APPROVED BY/DATE: JDG 12JAN2024	SCALE: NTS	CAD FILE NAME: CTI-S12009_B CAD SAVE DATE: Monday, March 4, 2024 9:48:26 PM	SHEET: 1 OF 1