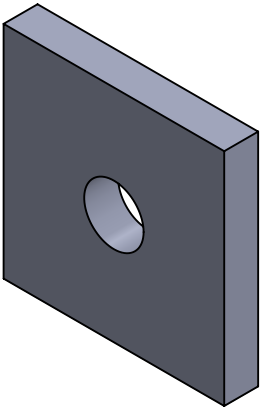
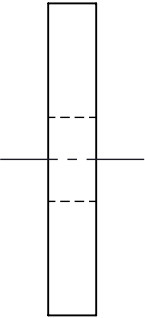
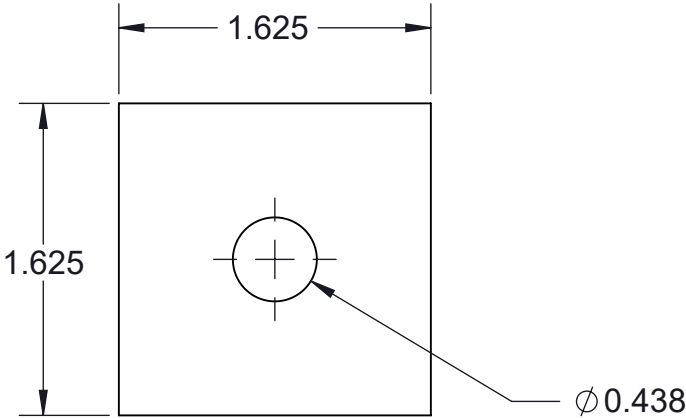


TF38WSQ-(*) SQUARE WASHER, 7/16" HOLE

(*) INSERT MATERIAL/FINISH:
ZN - GALVANIZED
HD - HOT DIP
S6 - STAINLESS STEEL 316
S4 - STAINLESS STEEL 304
AL - ALUMINUM




ISOMETRIC VIEW



NOTES:

- 1) ALL DIMENSIONS SHOWN ARE NOMINAL.
- 2) DIMENSIONS SHOWN ARE IN INCHES UNLESS OTHERWISE NOTED.

PROPRIETARY AND CONFIDENTIAL THE INFORMATION CONTAINED IN THIS DRAWING IS THE SOLE PROPERTY OF CT INNOVATIONS. ANY REPRODUCTION IN PART OR AS A WHOLE WITHOUT THE WRITTEN PERMISSION OF CT INNOVATIONS IS PROHIBITED.			
		TITLE: TF38WSQ-(*) SQUARE WASHER, 7/16" HOLE	
DRAWN BY/DATE: LW 12JAN2023		SIZE: B	DWG. NO.: CTI-S12007
APPROVED BY/DATE: JDG 05JAN2024		SCALE: NTS	CAD FILE NAME: TF38WSQ_A CAD SAVE DATE: Monday, March 4, 2024 9:47:26 PM
			REV: A SHEET: 1 OF 1