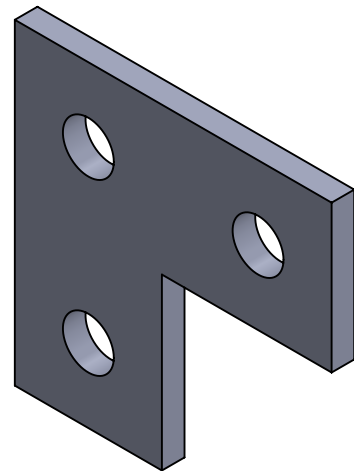
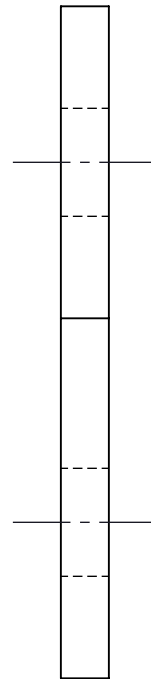
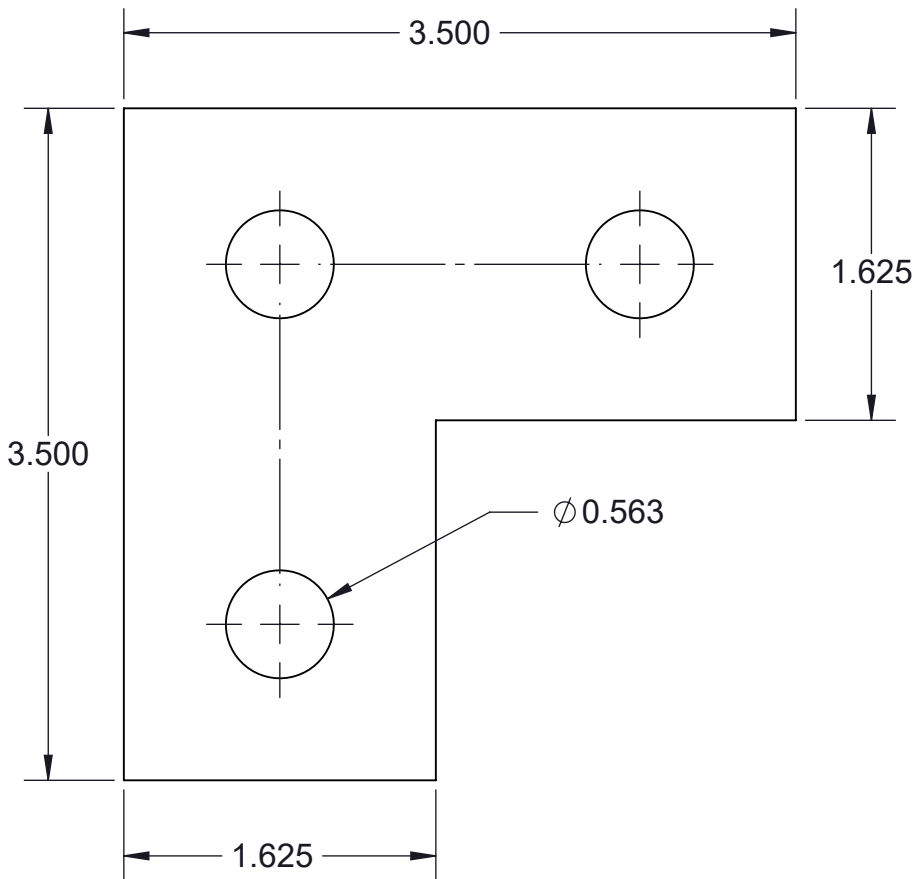



TF104FP-(*) THREE HOLE FLAT PLATE CORNER FITTING

- (*) INSERT MATERIAL/FINISH:
ZN - GALVANIZED
HD - HOT DIP
S6 - STAINLESS STEEL 316
S4 - STAINLESS STEEL 304
AL - ALUMINUM



ISOMETRIC VIEW

- NOTES:**
1) ALL DIMENSIONS SHOWN ARE NOMINAL.
2) DIMENSIONS SHOWN ARE IN INCHES UNLESS OTHERWISE NOTED.

PROPRIETARY AND CONFIDENTIAL THE INFORMATION CONTAINED IN THIS DRAWING IS THE SOLE PROPERTY OF CT INNOVATIONS. ANY REPRODUCTION IN PART OR AS A WHOLE WITHOUT THE WRITTEN PERMISSION OF CT INNOVATIONS IS PROHIBITED.			
	TITLE: TF104FP-(*) THREE HOLE FLAT PLATE CORNER FITTING		
	DRAWN BY/DATE: LW 19DEC2023	SIZE: B	DWG. NO.: CTI-S12005
	APPROVED BY/DATE: JDG 12JAN2024	SCALE: NTS	REV: B
		CAD FILE NAME: CTI-S12005_B CAD SAVE DATE: Monday, March 4, 2024 9:20:47 PM	SHEET: 1 OF 1