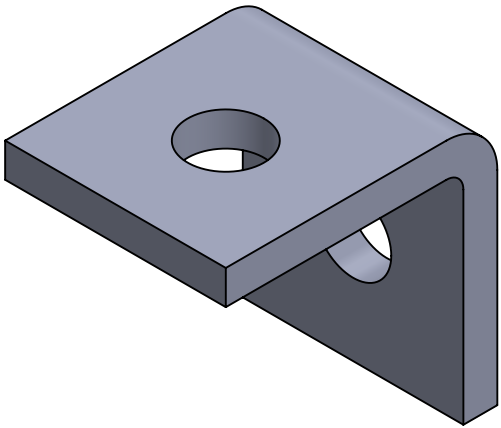
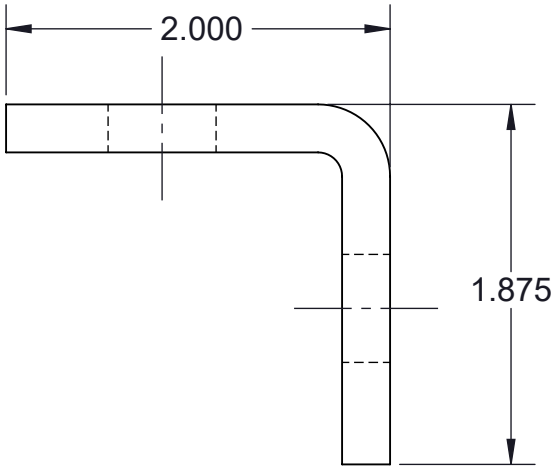
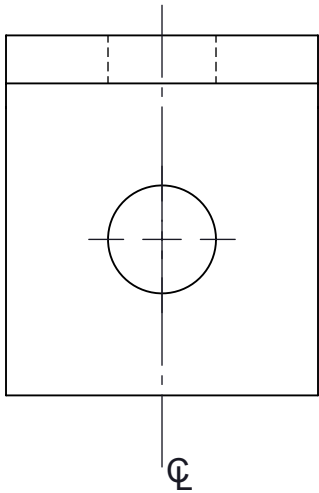
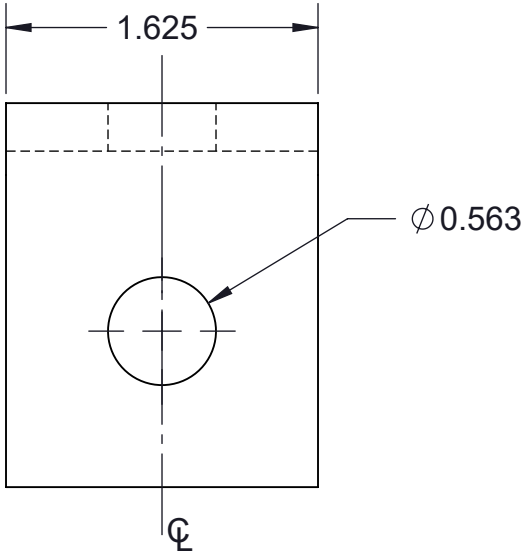



TF202AF-(*) TWO HOLE 90DEG END CONNECTOR ANGLE FITTING

(*) INSERT MATERIAL/FINISH:
ZN - GALVANIZED
HD - HOT DIP
S6 - STAINLESS STEEL 316
S4 - STAINLESS STEEL 304
AL - ALUMINUM



ISOMETRIC VIEW

NOTES:
1) ALL DIMENSIONS SHOWN ARE NOMINAL.
2) DIMENSIONS SHOWN ARE IN INCHES UNLESS OTHERWISE NOTED.

PROPRIETARY AND CONFIDENTIAL THE INFORMATION CONTAINED IN THIS DRAWING IS THE SOLE PROPERTY OF CT INNOVATIONS. ANY REPRODUCTION IN PART OR AS A WHOLE WITHOUT THE WRITTEN PERMISSION OF CT INNOVATIONS IS PROHIBITED.			
	TITLE: TF202AF-(*) TWO HOLE 90DEG END CONNECTOR ANGLE FITTING		
	DRAWN BY/DATE: LW 13DEC2023	SIZE: B	DWG. NO.: CTI-S12001
	APPROVED BY/DATE: JDG 08MAR2024	SCALE: NTS	REV: B
		CAD FILE NAME: TF2H90_A CAD SAVE DATE: Monday, March 4, 2024 3:28:26 PM	SHEET: 1 OF 1